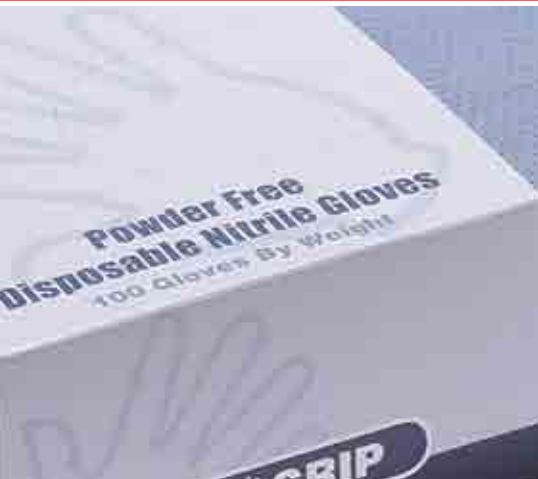


TUFF-GRIP | MEDI-GRIP | TUFF-GARD | MEDI-GARD

LEATHER MECHANIC | LEATHER DRIVER | LEATHER PALM
| LEATHER WELDING | CUT AND HEAT RESISTANT | NYLON /
POLYESTER SHELL WITH COATING | SUPPORTED - NITRILE COAED
| SUPPORTED - PVC COATED | UNSUPPORTED | STRIN KNIT
| COTTON - HOTMILL | COTTON | COTTON - GARDEN |
DISPOSABLE GLOVES | RESPIRATORY NEEDS | SAFETY
GLASSES | GOGGLES | SAFETY VESTS | DISPOSABLE
WEAR | APRONS | RAINWEAR | PACKING NEEDS -TAPES



We Bring Safety To Life



MISSION STATEMENT

We aim to provide quality workforce safety and protection.

Our mission is to “Continuously Exceed Our Customers’ Increasing Expectations.” We works closely with distributors to provide innovative and quality products, solid marketing strategies and valuable information to support our customers. Our goal is to enhance worker safety and improve productivity in order to create a more stable working environment.

Adapting to changes in safety needs as well as creating and seeking opportunities for customers are our daily task. We turn customers’ comments into positive action and direct energy. We are here to cover your workers from head to toe and enable your business to grow as you have anticipated. We thank you for your support and for allowing us to continue to serve you.



* Preview of some of our new package designs.



CATEGORY	PAGES
MISSION STATEMENT	02
TABLE OF CONTENTS	03
GLOSSARY OF TERMS	04 - 05
GENERAL PATTERN OF GLOVES	06
MEASURING & APPLICATIONS FOR PROPER FIT	07
LEATHER & SYNTHETIC MECHANIC	
Mechanic Gloves	08 - 09
LEATHER DRIVER	
Driver Gloves - Pig Skin, Cowgrain & Goat Skin	10 - 11
Split Leather Driver Gloves - Cow Split	12
LEATHER PALM	
Standard Leather Palm Gloves	13 - 15
LEATHER WELDING	
Welding Gloves	16
CUT & HEAT RESISTANT	
Cut & Kevlar Heat Resistant Gloves	17 - 18
COATED GLOVES	
Palm Coated - PU, Nitrile & Latex Coating	19 - 20
Palm Coated String Knit - Latex Coating	21
CHEMICAL RESISTANT GLOVES	
Supported Gloves - Nitrile & PVC	22 - 23
Unsupported Gloves - Nitrile, Latex & Neoprene	24
STRING KNIT	
Plain & Dotted String Knit Gloves	25
Plain String Knit Gloves	26
String Knit - Bleach White & Gardening Gloves	27
COTTON - HOTMILL	
Hot Mill - Heat Resistant Gloves	28 - 30

CATEGORY	PAGES
COTTON	
Jersey & Canvas Gloves	31
Terry Cloth & Inspection Gloves	32
DISPOSABLE GLOVES	
Latex Disposable Gloves	33
Vinyl Disposable Gloves	34
Nitrile Disposable Gloves	35
PE & Other Disposable Gloves	36
RESPIRATORY NEEDS	
Earloop & Nuisance Dust Masks	37
N95 Respirators	38
SAFETY GLASSES GOGGLES	
Safety Glasses	39 - 42
Goggles, Visitor Specs	43
SAFETY VEST-HI VIZ	
Safety Vest Information & Size Chart	44
General Purpose Vests	45 - 46
Class II Vest & T-Shirt	47 - 49
Surveyor's Vests	50
Class III Vest & T-Shirt	51 - 52
Class III Safety Jacket	53
DISPOSABLE WEAR	
Disposable Head & Foot Wear	54
Back Support	54
Disposable & Reusable Sleeves	55
Disposable Wear Material & Information	56
Coveralls & Lab Coats	57
APRONS	58
RAIN PROTECTION	59
PACKING NEEDS - TAPES	
Stretch Film, Packing & Masking Tape	60
Electrical & Duct Tape	61
Vinyl (Marking) & Caution Tape	62
TERMS, CONDITIONS & SERVICES	63
Index	64 - 67

GLOSSARY OF TERMS

Band Top	Band of material used as a cuff on gloves.
Binding	Thin fabric sewn on the entire cuff circumference to prevent the cuff material from fraying.
Chlorination	Process in glove manufacturing that is generally applied to unsupported gloves for hardening the glove interior. This makes the gloves easier to don and helps keep them from sticking together. Chlorination is performed during manufacturing by rinsing gloves in a chlorinated solution.
Clute Cut	Glove style with a one-piece palm and no seam at the base of the finger. There are seams along the fingers on the inside. Flexible and good for cotton, synthetics, and economical, lightweight leather gloves. Not recommended for heavy gloves.
Color Coding	Standard glove trade color codes are: Yellow – Extra Small (7); Red – Small (8); Green – Medium (9); Brown – Large (10); Blue – Extra Large (11); Black – XXL (12)
Cuff	The cuff is the end of the glove, the material extending beyond the palm of the hand to give extra protection to the wrist and forearm. Glove cuffs can include several styles, such as gauntlet, pinking, rolled, safety, serrated, slip-on and wristlet cuffs.
Cut Resistance	The ability of a glove material to resist cutting through when exposed to sharp surfaces.
Dipping	A process in glove manufacturing where a form or glove liner is put into an uncured polymer compound. Glove manufacturing may use multiple dips to provide desired glove thickness and other characteristics.
Fabric Weight	Usually expressed as “8-ounce”, “24-ounce” or some other number. This is the weight of a full square yard of the fabric that the glove is sewn from. So a square yard of fabric used to make an 8-ounce brown jersey glove weighs 8 ounces.
Flock Lining	Glove lining of fine cotton fibers for moisture absorption and easy donning.
Full Lining	A “glove within a glove,” the lining covers the entire interior surface of the glove.
Gauntlet Guff	A 4 to 4 ½ inch wide band of bonded material sewn to a glove as a cuff. Gauntlet cuff gloves are designed to be removed quickly if necessary.
Interlock Lining	The inner glove is made of lightweight cotton interlock knit fabric.
Jersey Lined	The glove is lined with brushed cotton fabric.
Kevlar®	The registered trademark for a light, strong synthetic fiber, developed by DuPont. It is 5 times stronger than steel, yet at the same time lightweight, flexible and comfortable. Its resistance to chemicals, heat, flames, cuts, and breaking makes it one of the best protective materials for gloves.
Keystone Thumb	Type of inset thumb on full-leather glove patterns. Provides additional wear plus superior movement and comfort. Found mostly on driver's gloves.
Knit Wrist	A knit wrist is a stretch-knitted cuff, typically made from cotton, used to protect the wrist and hold the glove in place securely. Also excellent protection against particles falling into the glove.
Knuckle Strap	A band of leather across the back of a glove covering the knuckle area to provide additional bump protection.
Latex	Natural rubber product that offers barrier protection to guard against contaminants and chemicals. Stretches for comfort. Synthetic materials are frequently stiffer than latex, hence less comfortable to wear. Latex gloves are usually less expensive than synthetic rubber gloves.
Nap	In fabric gloves, the loose ends of woven fibers that appear fluffy. Nap-out on chore gloves, nap-in on cotton flannel styles.

Neoprene	Synthetic rubber with a high chemical and heat resistance. Provides superior support, flexibility, warmth and impact protection.
Nitrile	Nitrile gloves are manufactured using synthetic latex, contain no latex proteins, and are three times more puncture-resistant than natural rubber, and have superior resistance to abrasions.
Nylon	Synthetic fiber that is lightweight, exceptionally strong, resilient and abrasion-resistant. It is easy to wash, fast-drying and resists shrinkage, wrinkling and damage from oil and many chemicals.
Polymer	Material that can be liquefied for use as a coating on gloves, such as PVC, vinyl, neoprene, nitrile, or rubber.
Polypropylene	Economical, tough, heat-resistant material that offers high tear resistance plus excellent resistance to organic solvents, degreasing agents, acids and alkalis. Lightweight, non-toxic, resistant to staining, retains flexibility and has a low moisture absorption rate.
Polyurethane (<i>Poly</i>)	Synthetic material with high abrasion resistance, chemical-resistance and flexibility. Polyurethane offers excellent wear properties, flexibility and elastic memory. It is resistant to oils, solvents, fats, greases and gasoline and will remain flexible down to -90°F and in hot water up to 175°F.
Puncture Resistant	Due to their inherent construction, conventional materials such as cotton, leather, and nylons are unable to stop sharp objects from penetrating. Puncture-resistant products provide superior puncture protection, utilizing a variety of different technologies such as an Aramid liner or metal mesh.
PVC (<i>Polyvinyl chloride, known as Vinyl</i>)	PVC protects against a broad range of low-hazard chemicals. It has high strength, good weather resistance and retains its shape. It is non-toxic and has good electrical insulating properties.
Reversible Gloves	Almost always made from a jersey material with a single seam around the entire periphery and a separate cuff sewn on as the last step. Reversible styling enables the wearer to wear the glove on either hand.
Rubberized	A term used to describe the bonding of material layers in a glove cuff with rubber cement.
Safety Cuff	A 2- to 2 ½-inch-wide band of bonded material sewn to a glove as a cuff, sometimes with a slit opening on the side. Safety cuff gloves are designed to be removed quickly if required.
Shoulder Split	This suede leather comes from the shoulder area where the hide is less uniform in density and appearance. The result is a less-durable, but more affordable leather.
Starched Cuff	Two layers of fabric laminated and stiffened with starch, used as a band or safety cuff.
Straight Thumb	A glove thumb that normally lies straight with the index finger. Common to most fabric gloves and drivers gloves.
String Knits	Fabric gloves or sleeves fabricated using a machine to knit the product in one piece rather than sewing pieces of material together.
Supported Gloves	Chemical-resistant coating over a cloth shell or lining.
Tensile Strength	In leather, tensile strength is important. Leather has most of its tear resistance in the split portion of the hide due to the three-dimensionally interlocking fibers. Grain leather has a low tear resistance due to the vertical fiber structure.
Terry Cloth	Poly/cotton material blend tough enough to hold up to the demands of a work glove, yet soft enough to wipe sweat and debris away from your face. Terry cloth can absorb up to 27 times its own weight in water.
Unsupported Glove	A glove with no fabric lining, made by dipping a mold into liquid latex or plastic. The glove is created when the material solidifies and is removed from the mold.
Wing Thumb	Glove construction that angles the thumb diagonally across the palm. Allows good flexibility with no seams on the palm side to obstruct work or cause fatigue. Improves comfort similar to inset thumb designs. Common on welding, drivers', leather palm, and ergonomic gloves.

General Patterns

GUNN



- Extends glove life keeping seams out of work area.
- Available in continuous and wing thumb.
- Made in leather palm and all leather.

CLUTE



- Seams on back of glove reduce splitting.
- Holds work area more tightly to palm.
- One piece palm.
- Made in cotton and leather palm styles.

REVERSIBLE



- Gunn pattern with thumb out of side.
- Glove can be worn on either hand.

Leather Palm Glove Features

STRAIGHT THUMB



- Continuous full leather thumb.
- Seam around thumb

KEYSTONE THUMB



- Thumb set-in as a separated piece.
- Positioned naturally for maximum comfort.
- Thumb seam is reinforced with extra stitching

WING THUMB



- Thumb out to side.
- Welts added to the seams for strength.

General Cuff Styles

KNIT WRIST



- Provides comfort and a snug fit.

BAND TOP



- For easy removal and good circulation.

SAFETY CUFF



- Side slit enables wearer to throw off glove quickly.
- Comes in 2-1/2" & 4-1/2".

GAUNTLET



- Easy removal and holds tucked sleeve in glove.

SLIP ON



- Easy removal.



Measuring For Proper Fit

Without a proper fit, gloves can be clumsy to work with, uncomfortable, cause hand fatigue, and ultimately be hazardous. When measuring for proper fit, you should consider two primary factors - length and hand size:



To find out your glove size, measure (in inches) around your hand with a tape measure across your palm. You should use your dominant hand, the right if you are right-handed, and the left if you are left-handed.

Glove Size Equivalents

Some manufacturers indicate glove sizes by number and others by letters standing for Small, Medium, Large, etc. We always indicate the size of a pair of gloves the same way the manufacturer does. Use the table at the bottom to translate between “letter sizes” and “number sizes”.

Sizes for UNISEX Gloves and Mittens

	XXS	XS	S	M	L	XL	XXL	XXXL
Circumference of the Hand in Inches	6.5	7	7.5	8.5	9	9.5	10	11

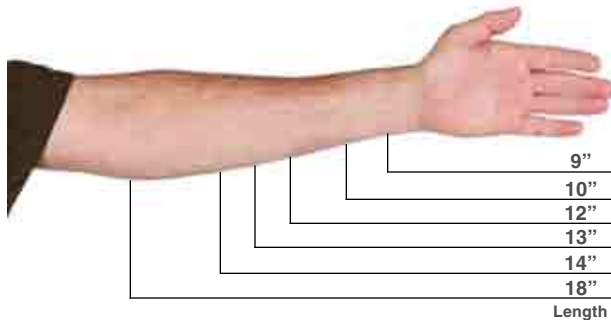
Sizes for WOMEN’S Gloves and Mittens

	XXS	XS	S	M	L	XL	XXL	XXXL
Circumference of the Hand in Inches	-	6	6.5	7	7.5	8	-	-

MEN’S SIZES

	XXS	XS	S	M	L	XL	XXL	XXXL
Circumference of the Hand in Inches	-	7	7.5 - 8	8.5 - 9	9.5 - 10	10.5 - 11	11.5 - 12	-

Your Glove Length



Glove Applications:

Coated Machine Knit Gloves	Agriculture and Veterinary, Industrial and General Use, Food Service, Food Processing
Cotton Gloves	Automotive, Assembly, Food Industry, Inspection, Industrial, Parts Handling and General Use
Cut and Sewn Gloves	Industrial and General Use , Janitorial, Sanitation and Laboratory
Cut Resistant Gloves	Agriculture and Veterinary, Industrial and General Use, Food Service, Food Processing
Disposable Gloves	Industrial and General Use Gloves
Exam Gloves	Food Service, Food Processing , Agriculture and Veterinary
Heat Resistant Supported	Food Service, Food Processing
Kevlar Gloves	Assembly, Metal work, Cut Protection, Heat Insulation Work
Latex Exam Gloves	Industrial and General Use, Janitorial, Sanitation and Laboratory, Medical, Dental, EMS
Latex Gloves	Automotive, Beauty & Nail Industry, Food Processing, Food Service, Industrial and General Use, Agriculture and Veterinary
Leather Gloves	Agricultural, Construction, Cabling, Foundry, Industrial, Driving
Machine Knit & Coated Knit Gloves	Agriculture and Veterinary, Industrial and General Use, Food Service, Food Processing
Nitrile Exam Gloves	Industrial and General Use, Janitorial, Sanitation and Laboratory, Medical, Dental, EMS
Nitrile Gloves	Automotive, Food Processing, Food Service, Industrial and General Use, Agriculture and Veterinary
Nylon Gloves	Inspection, Parts Assembly, Pharmaceutical, Industrial on Low Lint & High Tinsel Strength Work
PE Disposable Gloves	Food Processing, Food Preparation Service
Polyurethane Gloves	Electronic, Parts Handling, General Assembly, Metal Stamping, General Purpose
Supported Gloves	Industrial and General Use , Food Service, Food Processing, Janitorial, Sanitation and Laboratory, Agriculture and Veterinary
Synthetic Leather Gloves	Agricultural, Construction, Cabling, Foundry, Industrial, Driving
Terrycloth Products	Food Service
Unsupported Gloves	Industrial and General Use , Food Service, Food Processing, Janitorial, Sanitation and Laboratory, Agriculture and Veterinary
Vinyl Exam Gloves	Medical, Dental, EMS
Vinyl Gloves	Food Processing, Food Service, Industrial and General Use, Agriculture and Veterinary



Back Side



Palm Side

NEW

33-4001
GOAT SKIN
MECHANIC GLOVE

- Hook & Loop (Velcro) Closure, Fluorescent Yellow
- Unlined
- Kevlar Sewn
- TPR Knuckle Guards
- Cut Resistant
- Size: S, M, L, XL
- 120 Pairs / Case

THE GOBLIN

Major Gloves Goblin Glove is suitable for precision as well as heavy duty work. The TPR (Thermal Plastic Rubber) on the knuckle and fingers protect from impact.

The gloves offers good dexterity and reduces user fatigue. High density helps reduce tremor impact and the palm is protected with Kevlar thread stitching to ensure durability.

1	Unique TPR (Thermal Plastic Rubber) rib panels on back, fingers & knuckles to protect against impact.
2	High Visibility.
3	Velcro Closure for better fit.
4	Stretch Spandex Fabric on back of the hand to provide ventilation and precise fit.
5	Double leather for better protection.
6	Palm reinforcement.
7	Goat Skin for durability and grip.
8	Neoprene cuff for snug fit.
9	Pull tab to hook on waist.

GOLIATH (IMPACT RESISTANT/ HI VISIBILITY)

MajorGlove's Goliath glove offers high dexterity and unparalleled grip with no cost to protection. The TPR (thermal plastic rubber) on the back, knuckles & fingers protects against impact. Not only does the foam lining strengthen the composition of the glove but it is shielded by synthetic leather. The Neoprene cuffs offers a snug fit. The silicone pads offer superior grip, and along with the foam lining, protect the hands from impact.



NEW

33-5001
ANTI-VIBRATION
MECHANIC GLOVE

- Hook & Loop (Velcro) Closure
- Hi Viz Orange
- Silicone Pads
- Foam Lining
- Synthetic Leather
- TPR Knuckle Guards
- Size: M, L, XL
- 120 Pairs / Case



33-6001
MECHANIC GLOVES -
SYNTHETIC LEATHER

- Spandex Fabric Back
- Hook & Loop (Velcro) Closure
- Synthetic Leather Palm Patch
- Single Pair Tagged
- Sold by Dozen or Case
- Size: S, M, L, XL, 2XL
- 10 Dozen / Case

33-6002
MECHANIC GLOVES SYNTHETIC
LEATHER - FULL FINGERS

- Spandex Fabric Back
- Hook & Loop (Velcro) Closure
- Synthetic Leather Palm Patch
- Single Pair Tagged
- Sold by Dozen or Case
- Size: S - XL
- 10 Dozen / Case



33-6003
MECHANIC GLOVES SYNTHETIC
LEATHER - FINGERLESS

- Spandex Fabric Back
- Hook & Loop (Velcro) Closure
- Synthetic Leather Palm Patch
- Single Pair Tagged
- Sold by Dozen or Case
- Size: S - XL
- 10 Dozen / Case



33-7001
MECHANIC GLOVES -
DEER SKIN

33-7002
MECHANIC GLOVES -
GOAT SKIN

- Spandex Fabric Back
- Hook & Loop (Velcro) Closure
- Single Pair Tagged
- Sold by Dozen or Case
- Size: S - XL
- 10 Dozen / Case



33-7002



33-8001
MECHANIC GLOVES - GOAT SKIN

- Spandex Fabric Back
- Hook & Loop (Velcro) Closure
- Single Pair Tagged
- Sold by Dozen or Case
- Size: S - XL
- 10 Dozen / Case



33-9001
MECHANIC GLOVES - PIG SKIN

33-9002
MECHANIC GLOVES - COW GRAIN

- Spandex Fabric Back
- Hook & Loop (Velcro) Closure
- Single Pair Tagged
- Sold by Dozen or Case
- Size: S - XL
- 10 Dozen / Case

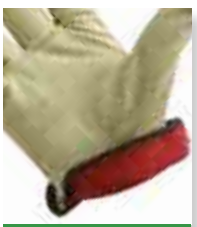




32-1380
PIGSKIN DRIVER GLOVES

32-1380P
PIGSKIN DRIVER GLOVES
WITH RED JERSEY LINING
(See Below Photo)

- Keystone Thumb
- Shirred Elastic Back
- Color Coded Hemmed Cuff
- Unlined / Lined
- Standard Pigskin
- Sizes: S, M, L, XL
- 10 Dozen / Case



32-1380P

NEW

32-1380HVO
PIG SKIN DRIVER GLOVES

- B/C Grade Keystone Thumb
- Orange HI-VIZ Finger Tips
- Sizes: S, M, L, XL
- 10 Dozen / Case



NEW

32-1383HVO
COW GRAIN DRIVER GLOVES

- B/C Grade Keystone Thumb
- Orange HI-VIZ Finger Tips
- Sizes: S, M, L, XL
- 10 Dozen / Case



* **32-1383AA**
A GRADE COWGRAIN DRIVER GLOVES



32-1383AA
A GRADE COWGRAIN
DRIVER GLOVES

32-1383AB
AB GRADE COWGRAIN
DRIVER GLOVES

32-1383
STANDARD GRADE
COWGRAIN DRIVER GLOVES

32-1383EC
ECONOMICAL CD GRADE
COWGRAIN DRIVER GLOVES

- Keystone Thumb
- Shirred Elastic Back
- Color Coded Hemmed Cuff
- Unlined
- Sizes: S, M, L, XL
- 10 Dozen / Case



32-1371
COWGRAIN DRIVER GLOVES
WITH STRAIGHT THUMB

32-1371EC
ECONOMICAL CD GRADE
COWGRAIN DRIVER GLOVES

- Shirred Elastic Back
- Color Coded Hemmed Cuff
- Unlined
- Standard Cow Grain
- Sizes: S, M, L, XL
- 10 Dozen / Case

32-1383GB
COWGRAIN GOLDEN BROWN
DRIVER GLOVES WITH
KEYSTONE THUMB



- Shirred Elastic Back
- Color Coded Hemmed Cuff
- Unlined
- Standard Cow Grain
- Sizes: S, M, L, XL
- 10 Dozen / Case



32-1384
COWGRAIN DRIVER GLOVES

- Adjustable Strap Back
- Keystone Thumb
- Color Coded Hemmed Cuff
- Unlined
- Sizes: S, M, L, XL
- 10 Dozen / Case



32-1383PP
COWGRAIN DRIVER GLOVES
WITH LINING

- Keystone Thumb
- Shirred Elastic Back
- Color Coded Hemmed Cuff
- Red Fleece Lined
- Standard Cow Grain
- Sizes: S, M, L, XL
- 10 Dozen / Case



32-1383PP



32-1371K
GRAIN COWHIDE WITH SPLIT
LEATHER BACK - STRAIGHT THUMB

- Shirred Elastic Back
- Color Coded Hemmed Cuff
- Unlined
- Standard Cow Grain
- Sizes: S, M, L, XL
- 10 Dozen / Case



32-1383K
GRAIN COWHIDE WITH
SPLIT LEATHER BACK -
KEYSTONE THUMB

- Shirred Elastic Back
- Color Coded Hemmed Cuff
- Unlined
- Standard Cow Grain
- Sizes: S, M, L, XL
- 10 Dozen / Case



32-1384K
GRAIN COWHIDE WITH SPLIT
LEATHER BACK - KEYSTONE
THUMB WITH PULL STRAP

- Adjustable Strap Back
- Keystone Thumb
- Color Coded Hemmed Cuff
- Unlined
- Sizes: S, M, L, XL
- 10 Dozen / Case



32-1393
GOAT SKIN DRIVER GLOVES

32-1393P
GOAT SKIN DRIVER GLOVES
WITH RED JERSEY LINING

32-1394P
GOAT SKIN DRIVER GLOVES
WITH RED JERSEY LINING
AND ADJUSTABLE STRAP

- Keystone Thumb
- Color Coded Hemmed Cuff
- Sizes: S, M, L, XL
- 10 Dozen / Case



32-1393



55-1451
BOURBON BROWN SPLIT LEATHER
DRIVER WITH KEYSTONE THUMB

- Shirred Elastic Back
- Color Coded Hemmed Cuff
- Unlined
- Standard Split Cowhide
- BC Grade
- Sizes: M, L
- 10 Dozen / Case

55-1450PB
PEARL GREY SPLIT LEATHER DRIVER GLOVES WITH
KEYSTONE THUMB (PILE LINING)

55-1450
PEARL GREY SPLIT LEATHER DRIVER WITH
KEYSTONE THUMB (UNLINED)

- Shirred Elastic Back
- Color Coded Hemmed Cuff
- Standard Split Cowhide
- BC Grade
- Sizes: S, M, L, XL
- 10 Dozen / Case



55-1450PB





* 30-3110A
PREMIUM GREEN DOUBLE PALM.

30-3110A
PREMIUM GREEN
DOUBLE PALM

30-3110
STANDARD GREEN
DOUBLE PALM

30-3111A
PREMIUM JOINT
LEATHER DOUBLE
PALM

30-3111
ECONOMICAL JOINT
LEATHER DOUBLE PALM

- Gunn Pattern
- Knuckle Strap
- Rubberized Safety Cuff
- Size: S, L, XL
- 6 Dozen / Case



30-8900A
PREMIUM
SHOULDER
LEATHER

30-8900
STANDARD
SHOULDER
LEATHER

30-8902
ECONOMY SHOULDER LEATHER

- Gunn Pattern
- Knuckle Strap
- Rubberized Safety Cuff
- Size: S, L, XL
- 6 Dozen / Case





30-3111Y
GOLDEN YELLOW JOINT LEATHER PATCH PALM

30-3111Y-SP
GOLDEN YELLOW SPLIT LEATHER SINGLE PALM

- 2 1/2" Gunn Pattern
- Knuckle Strap
- Rubberized Cuff
- Size: L
- 6 Dozen / Case



30-3111Y-SP



30-3111P
JOINT LEATHER DOUBLE PALM

- 4 1/2" Gauntlet Cuff
- Rubberized Safety Cuff
- Knuckle Strap
- Size: L
- 6 Dozen / Case

30-8900HP
HI-DENSITY RUBBERIZED CUFF

30-8900P
STANDARD SHOULDER LEATHER

- 4 1/2" Gauntlet Cuff
- Rubberized Safety Cuff
- Knuckle Strap
- Size: L
- 6 Dozen / Case



30-5800P-YBU
THERMO LINED SPLIT COWHIDE GLOVES

- Split Cowhide
- Gunn Pattern
- Wing Thumb Safety Cuff
- Blue with Yellow Back
- Lining Provides Warmth
- Size: Large
- Case Pack: 10 Dozen



30-8800Y
STANDARD SHOULDER LEATHER

30-8800YBK
STANDARD SHOULDER LEATHER

- Gunn Pattern
- Rubberized Safety Cuff
- Size: L
- 10 Dozen / Case



30-8800YBK



30-0888-1
MULTI COLOR
FURNITURE LEATHER

- Gunn Pattern
- Patch Palm
- Starched Cuff
- Single Pair Tagged
- Size: L
- 10 Dozen / Case



30-1890
FULL FEATURE WITH
STARCHED CUFF

30-1890-1
FULL FEATURE WITH
STARCHED CUFF -
SINGLE PAIR TAGGED

- Gunn Pattern
- Starched Safety Cuff
- Knuckle Strap
- Patch Palm
- Size: L
- 10 Dozen / Case



30-2890
CLUTE PATTERN
WITH KNIT WRIST

30-2890A
PREMIUM CLUTE
PATTERN WITH KNIT WRIST

- Clute Pattern
- Knit Wrist
- Size: L
- 10 Dozen / Case



30-3320
FULL FEATURE WITH DENIM
CUFF AND SHOULDER SPLIT
PATCH PALM

- Gunn Pattern
- Knuckle Strap
- 2 1/2" Denim Safety Cuff & Back
- Size: L
- 10 Dozen / Case





31-4013KV
BROWN WELDING GLOVES
WITH REINFORCED THUMB

31-4013
BROWN WELDING LEATHER GLOVES

- Cow Split Leather
- Gunn Pattern
- Wing Thumb
- Kevlar Sewn
- Size: L
- 3 Dozen / Case



31-4013



31-4014
BLUE LEATHER WELDING WITH
REINFORCED THUMB & PALM

31-4014LH
BLUE WELDING GLOVE
LEFT HAND ONLY

- Cow Split Leather
- Gunn Pattern
- Wing Thumb
- Fully Weltd and Lined
- Kevlar Sewn
- Size: L
- 3 Dozen / Case



31-4014LH



31-4015
GREY WELDING
LEATHER GLOVES

- Cow Split Leather
- Gunn Pattern
- Wing Thumb
- Fully Weltd & Lined
- Size: L
- 3 Dozen / Case



31-4016DBKV
RED WELDING GLOVE WITH
KEVLAR SEWN AND DOUBLE
LEATHER ON ONE HAND

31-4016
RED WELDING
LEATHER GLOVES

- Cow Split Leather
- Gunn Pattern
- Wing Thumb
- Fully Weltd and Lined
- Size: L
- 3 Dozen / Case



31-4016



NEW

31-4014EC
BLUE WELDING
LEATHER GLOVES

- Cow Split Leather
- Economical Grade
- Size: L
- 3 Dozen / Case



* 20-5539BK
 CUT 5 H-POWER SHELL WITH
 FOAM NBR PALM COATED GLOVES
 (CUT RESISTANT).

HPPE Gloves High Performance Polyethylene Gloves

Fiber glass is a material consisting of numerous extremely fine fibers of glass. It is also known as fiber reinforced polymer made of a plastic matrix reinforced by fine fibers of glass.

Lycra is a type of synthetic elastic fabric and fibre used for tight-fitting garments.

Kevlar® - The registered trademark for a light, strong synthetic fiber, developed by DuPont. It is 5 times stronger than steel, yet at the same time lightweight, flexible and comfortable. Its resistance to chemicals, heat, flames, cuts and breaking makes it one of the best protective materials for gloves.



Fiber Glass



Kevlar Thread

***EN388 Protective Gloves
Against Mechanical Risk:**
Abrasion Resistance: 4
Blade cut Resistance: 5
Tear Resistance: 4
Puncture Resistance: 3



20-5538G
**CUT 5 H-POWER SHELL WITH
PU PALM COATED GLOVES (CUT RESISTANT)**

- HPPE, Glass fiber, Nylon, Lycra 72%, Polyurethane 28%
- Use for Steel / Automobile / Petrochemistry industries including jobs requiring metal / glass handling, precise / rough work
- Good for Food Processing, Light Oil Duty, Greased Tool / Machine Handling, and Clean Room Work
- Provides dexterity, comfort, durability and ventilation.
- Meets EN 388 Protective Gloves against Mechanical Risk Standard
- Size: S - XL
- 1 Pair per Poly Bag, 12 Pairs / Inner Bag, 144 Pairs / Case

***EN388 Protective Gloves
Against Mechanical Risk:**
Abrasion Resistance: 1
Blade cut Resistance: 2
Tear Resistance: 4
Puncture Resistance: 1



25-2800KV
**7 GAUGE KEVLAR / COTTON
PLATED GLOVE**

- PVC Dots on Both Sides
- Use for Steel / Automobile / Petrochemistry industries including jobs requiring metal / glass handling, precise / rough work
- Good for Food Processing, Light Oil Duty, Greased Tool / Machine Handling, and Clean Room Work
- Provides dexterity, comfort, durability and ventilation.
- Meets EN 388 Protective Gloves against Mechanical Risk Standard
- Size: S, L
- 12 Pairs / Bag, 144 Pairs / Case

***EN388 Protective Gloves
Against Mechanical Risk:**
Abrasion Resistance: 4
Blade cut Resistance: 5
Tear Resistance: 4
Puncture Resistance: 3



20-5539BK
**CUT 5 H-POWER SHELL WITH
FOAM NBR PALM COATED GLOVES (CUT RESISTANT)**

- HPPE, Glass fiber, Nylon, Lycra 72%, Foam Nitrile rubber 28%
- Use for Steel / Automobile / Petrochemistry industries including jobs requiring metal / glass handling, precise / rough work
- Provides dexterity, comfort, durability and ventilation.
- Meets EN 388 Protective Gloves against Mechanical Risk Standard
- Size: S - XL
- 1 Pair per Poly Bag, 12 Pairs / Inner Bag, 144 Pairs / Case

***EN388 Protective Gloves
Against Mechanical Risk:**
Abrasion Resistance: 4
Blade cut Resistance: 2
Tear Resistance: 4
Puncture Resistance: 4



25-3039BK
**KEVLAR SHELL WITH NBR PALM COATED
GLOVES (CUT & KEVLAR HEAT RESISTANT)**

- Kevlar 58%, Nylon & Lycra 14%, Foam Nitrile Rubber 28%
- Use for Metal Processing, Automotive Industry, Glass, Foundries and Wood Industry
- Good for Food Processing, Light Oil Duty, Greased Tool / Machine Handling, and Clean Room Work
- Provides dexterity, comfort, durability
- Ideal for Protecting Against Heat and Cut
- Meets EN 388 Protective Gloves against Mechanical Risk Standard
- Size: S - XL
- 1 Pair per Poly Bag, 12 Pairs / Inner Bag, 144 Pairs / Case



50-6639
WHITE NYLON SHELL,
GREY POLYURETHANE COATING

50-6639G
GREY NYLON SHELL,
GREY POLYURETHANE COATING

50-6639W
WHITE NYLON SHELL,
WHITE POLYURETHANE COATING

50-6639PBK
BLACK POLYESTER SHELL,
BLACK POLYURETHANE COATING

- Polyurethane Coated
- 13 Gauge Shell
- Single Pair Pack
- Size: S - XL
- 12 Dozen / Case



50-6639PBK



50-6639



50-8839
WHITE NYLON SHELL,
GREY NITRILE COATING

50-8839G
GREY NYLON SHELL,
GREY NITRILE COATING

50-8839PBK
BLACK POLYESTER SHELL,
BLACK NITRILE COATING

50-8839PG
GREY POLYESTER SHELL,
GREY NITRILE COATING

- 13 Gauge Shell
- Single Pair Pack
- Size: S - XL
- 12 Dozen / Case



50-8839G



50-8839PBK

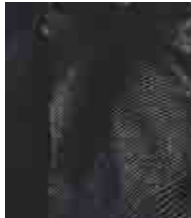
* **50-6639PBK**
BLACK POLYESTER SHELL,
BLACK PU COATING.





50-8838BKBK
BLACK POLYESTER SHELL
WITH BLACK NITRILE FOAM

- Nitrile Foam
- Single Pair Packed
- Color Coded Cuff
- Size: S-XL
- 12 Dozen / Case



NITRILE FOAM



50-8842PBK
BLACK POLYESTER SHELL
WITH TEXTURED BLACK
LATEX COATING

- Textured Latex Palm
- Single Pair Packed
- Color Coded Cuff
- Size: S-XL
- 12 Dozen / Case



TEXTURE



50-6639P-ASST-1
POLYESTER SHELL WITH
PU COATING - 1 PAIR TAGGED

- Single Pair Tagged
- 2 Assorted Colors
- Great Retail Packaging
- Size: L
- 6 Dozen / Case



50-6639P-ASST-1



50-8839P-ASST-1
POLYESTER SHELL WITH
NITRILE COATING - 1 PAIR TAGGED

- Single Pair Tagged
- 2 Assorted Colors
- Great Retail Packaging
- Size: L
- 6 Dozen / Case



50-8839P-ASST-1

50-3500C
 STRING KNIT WITH RED
 LATEX COATED PALM

50-3500C-2
 (2 PAIR TAGGED)
 STRING KNIT WITH RED
 LATEX COATED PALM

- Red Latex Coating
- Size: Men
- 25 Dozen / Case



50-3242
 GREY STRING KNIT WITH
 TEXTURED BLUE LATEX
 COATED PALM



50-3242BK
 GREY STRING KNIT WITH
 TEXTURED BLACK LATEX
 COATED PALM

- 10 Gauge Gray Cotton / Polyester Blend String Knit
- Knit Wrist
- Size: S, M, L, XL
- 12 Dozen / Case



50-3242BK

50-3600
 STRING KNIT WITH
 BLUE LATEX
 COATED PALM
 (Size: S - XL)

50-3600C
 STRING KNIT WITH
 BLUE LATEX
 COATED PALM -
 ECONOMICAL
 (Men Size Only)

- String Knit, Cotton / Polyester
- Knit Wrist
- 25 Dozen / Case



50-3248
 GREY STRING KNIT
 WITH TEXTURED GREEN
 NITRILE COATED PALM

- 10 Gauge Gray Cotton / Polyester Blend String Knit
- Knit Wrist
- Size: S, M, L, XL
- 12 Dozen / Case

50-3700C-2
 STRING KNIT
 WITH GREEN
 LATEX COATED PALM

- 2 Pair Tagged
- Green Latex Coating
- Size: Men
- 25 Dozen / Case





96-6110
SMOOTH FINISH BLUE NITRILE
COATED WITH OPEN BACK
CANVAS CUFF

- Heavy Weight Nitrile Palm
- Canvas Safety Cuff
- Size: L
- 10 Dozen / Case



NEW

96-6110FP
SMOOTH FINISH BLUE NITRILE
FULLY COATED

- Heavy Weight Nitrile Fully Coated
- Safety 2 1/2" Canvas Cuff
- Size: L
- 10 Dozen / Case

96-6120
SMOOTH FINISH BLUE NITRILE
COATED WITH KNIT WRIST

- Heavy Weight Nitrile Palm
- Knit Wrist
- Size: L
- 10 Dozen / Case



NEW

96-6120FP
SMOOTH FINISH BLUE NITRILE
FULLY COATED

- Heavy Weight Nitrile Fully Coated
- Knit Wrist with Jersey Lining
- Size: L
- 10 Dozen / Case



NEW

96-5419
12" CUFF WITH ROCKY FINISH

- 12" Cuff
- Jersey Lining
- Dark Red PVC with Rocky Finish
- Size: Men
- 10 Dozen / Case

96-5418
NATURAL RUBBER COATED

- Red PVC with Rocky Finish
- 2 1/2" Rubberized Safety Cuff
- Dark Red PVC with Rocky Finish
- Size: Men
- 10 Dozen / Case



PVC COATED

Single dipped smooth and semi-rough finish provide flexibility and protection. Single and double dipped Poly Vinyl Chloride (PVC) gloves are commonly used in the petro-chemical industry.



96-5401
SMOOTH FINISH BLACK PVC 12"

96-5401P
SMOOTH FINISH BLACK PVC 14"

96-5401Q
SMOOTH FINISH BLACK PVC 18"

- Single Dipped
- Interlock Lined
- Size: Men
- 10 Dozen / Case, 5 Dozen / Case



96-6901
SEMI-ROUGH FINISH BLACK PVC 12"

96-6901P
SEMI-ROUGH FINISH BLACK PVC 14"

96-6901Q
SEMI-ROUGH FINISH BLACK PVC 18"

- Single Dipped
- Interlock Lined
- Size: Men
- 10 Dozen / Case, 5 Dozen / Case

96-5402
SMOOTH FINISH
BLACK PVC

- Single Dipped
- Interlock Lined
- Knit Wrist
- Size: Men
- 10 Dozen / Case



96-5415
NATURAL LATEX COATED

- Crinkle Finish Latex Coating
- Jersey Lined
- 2 1/2" Rubberized Safety Cuff
- Size: Men
- 10 Dozen / Case



96-5417
FOAM INSULATED
FULLY COATED

- Semi - Rough PVC
- 4 Layers of Protection: Fleece, Polyester, Foam, Waterproof PVC
- Fluorescent Orange
- 2 1/2" Rubberized Safety Cuff
- Size: Men
- 5 Dozen / Case

96-5416
NATURAL
LATEX COATED

- Crinkle Finish Latex Coating
- Jersey Lined
- Knit Wrist Cuff
- Size: Men
- 10 Dozen / Case





41-0012
NATURAL CANNER GLOVES

- Embossed Grip on Palm and Fingers
- 12" in Length
- Flocklined
- Size: S, M, L, XL
- 12 Dozen / Case



41-0013
YELLOW HOUSEHOLD LATEX

41-0013-1
YELLOW HOUSEHOLD LATEX
(SINGLE PAIR PACKED) - Size M & L Only.

- Embossed Grip on Palm and Fingers
- 12" in Length
- Flocklined
- Rolled Cuff
- Size: S, M, L, XL
- 12 Dozen / Case



41-0013-1 ROLLED CUFF



41-0038
BLUE NEOPRENE OVER
YELLOW LATEX 13"

- 13" in Length
- Flocklined
- 28 MIL
- Size: S, M, L, XL
- 12 Dozen / Case



41-0057UN
11 MIL - 13" UNLINED
GREEN NITRILE

41-0058
15 MIL - 13" FLOCKLINED
GREEN NITRILE

41-0058UN
15 MIL - 13" UNLINED
GREEN NITRILE

- 13" in Length
- Unlined / Flocklined
- 11 MIL / 15 MIL
- Size: S, M, L, XL
- 12 Dozen / Case



50-1500 (Regular Weight)
500g COTTON / POLYESTER BLEND

50-1600 (Medium Weight)
600g COTTON / POLYESTER BLEND

50-1800 (Heavy Weight)
800g COTTON / POLYESTER BLEND

- Natural White
- Elastic Knit Wrist
- Seamless Knitted
- Reversible
- Size: S, M, L
- 25 Dozen / Case



50-1501
MEN COTTON / POLYESTER BLEND

50-1502
LADY COTTON / POLYESTER BLEND

- One Sided PVC Dots
- Natural White
- Elastic Knit Wrist
- Seamless Knitted
- Size: Men, Lady
- 25 Dozen / Case



50-2800
MEN COTTON / POLYESTER BLEND

50-2801
LADY COTTON / POLYESTER BLEND

- Two Sided PVC Dots
- Natural White
- Elastic Knit Wrist
- Seamless Knitted
- Reversible
- Size: Men, Lady
- 25 Dozen / Case



50-2890
MEN COTTON / POLYESTER BLEND

50-2891
LADY COTTON / POLYESTER BLEND

- Two Sided PVC Dots
- Bleached White
- Elastic Knit Wrist
- Seamless Knitted
- Reversible
- Size: Men, Lady
- 25 Dozen / Case

USE THIS SIMPLE TECHNIQUE TO DETERMINE PROPER GLOVE SIZE

Using a tape measure, measure completely around the hand at the fullest point, excluding the thumb. Use the chart below to convert the measurement to the proper glove size.

HAND MEASUREMENT	GLOVE SIZE
6"	X-SMALL
7"	SMALL
8"	MEDIUM
9"	LARGE
10"	X-LARGE

50-1400
REVERSIBLE
STRING KNIT

- 13 Gauge
- Natural White
- Elastic Knit Wrist
- Reversible
- Size: S / L
- 25 Dozen / Case



50-1500G
500g STRING KNIT - GREY

- Cotton / Polyester Blend
- Grey String Knit
- Elastic Knit Wrist
- Reversible
- Size: S, M, L
- 25 Dozen / Case



50-1600BK
600g STRING KNIT - BLACK

- Cotton / Polyester Blend
- Elastic Knit Wrist
- Reversible
- Seamless Knitted
- Size: S, M, L, XL
- 25 Dozen / Case



50-2600 (Medium Weight)
600g STRING KNIT - BLEACHED WHITE

- Cotton / Polyester Blend
- Elastic Knit Wrist
- Seamless Knitted
- Reversible
- Size: M,L
- 25 Dozen / Case

50-2200NY
NYLON
STRING KNIT
- MEDIUM WEIGHT

- 10 Gauge
- Bleached White
- Seamless Knitted
- Reversible
- Size: S, M, L
- 25 Dozen / Case



50-8000T
ORANGE STRING KNIT -
HONEY COMB WITH CRISS
CROSS PVC COATING

- Reversible
- Size: S, M, L, XL
- 12 Dozen / Case



Close Up

50-2300
POLYESTER
STRING KNIT -

- 7 Gauge
- Bleached White
- Heavy Duty
- Reversible
- Size: XS, S, M, L
- 25 Dozen / Case



50-2500
POLYESTER
STRING KNIT

- 7 Gauge
- Bleached White
- Seamless Knitted
- Reversible
- Size: S, M, L
- 25 Dozen / Case



88-1301-1
GARDENING GLOVES - FLORAL

- Single Pair Tagged
- Assorted Designs and Colors
- Styles May Vary From Pictures Shown
- Size: One Size Fits All
- 6 Dozen / Case



88-1301-1



NEW

60-2461CP
HOT MILL 30 OZ.

- Cotton with Lining
- 4 1/2" Band Top
- Straight Thumb
- Knuckle Strap
- Nap Out
- Size: Men
- 10 Dozen / Case



NEW

60-1960Q
HOT MILL 30 OZ.

- 2 1/2" Band Top
- 100% Cotton with Burlap Lining
- Straight Thumb
- Double Cuff
- Knuckle Strap
- Nap Out
- Size: Men
- 10 Dozen / Case



60-9920-G

60-9920-O
NEON ORANGE
HOT MILL

60-9920-G
NEON GREEN
HOT MILL

- High Visibility
- 20 oz.
- Size: Men
- 10 Dozen / Case



HOT MILL GLOVE USAGE DESCRIPTION

Hot mill gloves are used to handle high temperature objects. These gloves are available in the market in many styles and material according to the need of the customer.

Each glove has a different heat resistance capacity. Hot mill gloves are needed not only in the manufacturing units but also in the households. The need of type of glove totally depends on the work to be done with that.

For residential purposes the gloves are similar to heat resistant gloves but they are designed for light duty. Hot mill gloves are also needed in the manufacturing sectors such as chemical products, paints, surgical instruments, hospitals etc. The gloves are needed to do the work more conveniently and efficiently without any difficulty.



60-1990
DOUBLE PALM CANVAS

60-1990R
DOUBLE PALM CANVAS
- RED WRIST

- Straight Thumb
- 20 oz. Nap-In
- Knit Wrist
- Clute Pattern
- Size: L, XL
- 10 Dozen / Case



60-1990

60-1962
STANDARD FEATURE
HOT MILL

- 24 oz. Nap-Out
- Knit Wrist
- Cotton Canvas
- Straight Thumb
- Knuckle Strap
- Clute Pattern
- Size: Men
- 10 Dozen / Case



60-1960S
STANDARD FEATURE
HOT MILL

60-1960P
PREMIUM FEATURE
HOT MILL

- 24 oz. Hot Mill
- 2.5" Band Top
- Straight Thumb
- Knuckle Strap
- Size: Men
- 10 Dozen / Case



60-1961P
STANDARD FEATURE
HOT MILL

- 24 oz. Nap-Out
- Cotton Canvas
- Straight Thumb
- Knuckle Strap
- Clute Pattern
- 4.5" Canvas Cuff
- Size: Men
- 10 Dozen / Case

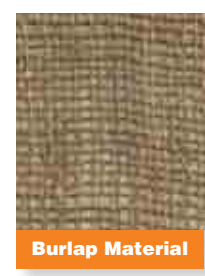




60-2460P
HEAVY WEIGHT
HOT MILL - 2 1/2" BAND TOP

60-2461P
HEAVY WEIGHT
HOT MILL - 4 1/2" CANVAS CUFF

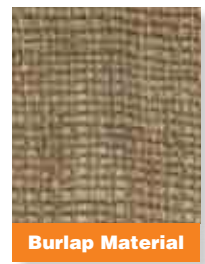
- Burlap Lining for Extra Heat Insulation
- 30 oz. Nap-Out Canvas
- Knuckle Strap
- Clute Pattern
- Size: Men
- 10 Dozen / Case



60-3690
HEAVY WEIGHT
GREEN HOT MILL
- WITH BURLAP

60-3690A
HEAVY WEIGHT GREEN
HOT MILL

- Straight Thumb
- 30 oz. Nap-Out Canvas
- Knuckle Strap
- Clute Pattern
- 2.5" Band Top
- Size: Men
- 10 Dozen / Case



60-1991
STANDARD
FEATURE HOT MILL

- Straight Thumb
- 20 oz. Nap-In
- Double Palm
- Clute Pattern
- 2.5" Band Top
- Size: Men
- 10 Dozen / Case



60-2340H
GOLDEN CHORE WITH
MATCHING KNIT WRIST

- Straight Thumb
- Two Layer Fleece
- Clute Pattern
- 20 oz. Golden Chore
- Golden Knit Wrist
- Size: Men
- 10 Dozen / Case



65-1880 / 65-1880C
MEN 8 OZ. BROWN JERSEY

65-1881 / 65-1881C
LADY 8 OZ. BROWN JERSEY

65-1880P
COTTON BROWN JERSEY

65-1880-1
MEN 8 OZ. BROWN JERSEY (1 PAIR TAGGED)

65-1812
MEN 12 OZ. BROWN JERSEY

NEW

- Matching Knit Wrist
- Clute Pattern
- 25 Dozen / Case



60-2680
MEN 8 OZ. COTTON CANVAS

60-2681
LADY 8 OZ. COTTON CANVAS

60-2680P
MEN 9 OZ. COTTON CANVAS

- Knit Wrist
- Clute Pattern
- Straight Thumb
- Black PVC Dots On Palm, Thumb and Index Fingers
- 25 Dozen / Case



65-2880
MEN 8 OZ. BROWN JERSEY

65-2881
LADY 8 OZ. BROWN JERSEY

- Knit Wrist
- Clute Pattern
- PVC Dots
- 25 Dozen / Case



60-1680
MEN 8 OZ.
COTTON CANVAS

60-1681
LADY 8 OZ.
COTTON CANVAS

- Knit Wrist
- Clute Pattern
- Straight Thumb
- 25 Dozen / Case



65-1954
LINED BROWN JERSEY

- Slip-On Style
- Straight Thumb
- Red Fleece Lined
- Size: Men
- 10 Dozen / Case



Inside Detail



50-1200
18 OZ. TERRY CLOTH GLOVES

50-1200P
24 OZ. TERRY CLOTH GLOVES

50-1200Q
22 OZ. TERRY CLOTH GLOVES

50-1200Q-G
22 OZ. TERRY CLOTH GREY GLOVES

- Seamless
- Reversible
- Size: Men
- 10 Dozen / Case



50-1200Q-G

60-4022
REVERSIBLE
NATURAL JERSEY

- Two Piece Reversible
- 100% Cotton Blend
- Knit Wrist
- Size: Men
- 25 Dozen / Case



66-6411
MEDIUM WEIGHT
COTTON LISLE

66-6412
HEAVY WEIGHT
COTTON LISLE

- Two Piece Reversible
- 100% Cotton Blend
- Self-Hemmed Cuff
- Size: Men, Lady
- 50 Dozen / Case



66-6401
LIGHT WEIGHT
COTTON LISLE

66-6401C/P
LIGHT WEIGHT POLY / COTTON
LISLE

66-6414
14" LIGHT WEIGHT COTTON LISLE

- Two Piece Reversible
- 100% Cotton Blend
- Unhemmed Cuff
- Size: Men, Lady
- 100 Dozen / Case



66-6414

66-6413
NYLON STRETCHABLE

- Color Coded Hemmed Cuff
- Reversible
- Size: Men, Lady
- 50 Dozen / Case





41-10WL-A

41-10WL (TUFF GRIP)
DISPOSABLE INDUSTRIAL
LATEX GLOVES

41-10WL-A (GREAT GLOVE)
DISPOSABLE INDUSTRIAL
LATEX GLOVES

- 100 Gloves by Weight Per Dispenser Box
- Ambidextrous
- Gloves Available in XS-XL
- Lightly Powdered
- 10 Box / Case



41-10WL



41-20WL-A



41-20WL

41-20WL (TUFF GRIP)
DISPOSABLE INDUSTRIAL
LATEX GLOVES

41-20WL-A (GREAT GLOVE)
DISPOSABLE INDUSTRIAL
LATEX GLOVES

- 100 Gloves by Weight Per Dispenser Box
- Ambidextrous
- Gloves Available in XS-XL
- Powder Free
- 10 Box / Case

41-20WL-P (TUFF GRIP)
DISPOSABLE INDUSTRIAL
LATEX GLOVES - PREMIUM

41-20WL-AP (GREAT GLOVE)
DISPOSABLE INDUSTRIAL
LATEX GLOVES - PREMIUM

- 100 Gloves by Weight Per Dispenser Box
- Ambidextrous
- Gloves Available in XS-XL
- Powder Free
- 10 Box / Case



41-20WL-AP



41-20WL-P



41-40ML-BK
DISPOSABLE MEDICAL
LATEX GLOVES -
BLACK COLOR

- Powder Free
- 100 Gloves by Weight Per Dispenser Box
- Ambidextrous
- Available in S-XL
- 10 Box / Case



41-40ML-A

41-40ML-A
DISPOSABLE MEDICAL LATEX
GLOVES - POWDER FREE

- 100 Gloves by Weight Per Dispenser Box
- Ambidextrous
- Gloves Available in S-XL
- 10 Box / Case



SM-1HDPF
LATEX POWDER FREE
HEAVY DUTY

- 100 Gloves by Weight Per Dispenser Box
- Heavy Duty
- 9 mil
- Available in S-L
- 10 Box / Case

PVC VINYL DISPOSABLE GLOVES

Are manufactured in compliance with 21CFR 177.2600 for food and pharmaceutical applications and with department of agriculture requirement for food processing.

Recommended Uses: Food Service | General Purpose



42-10WV-A



42-10WV

42-10WV (TUFF GRIP)
DISPOSABLE INDUSTRIAL
VINYL GLOVES

42-10WV-A (GREAT GLOVE)
DISPOSABLE INDUSTRIAL
VINYL GLOVES

- 100 Gloves by Weight Per Dispenser Box
- Lightly Powdered
- Ambidextrous
- Gloves Available in S-XL
- 10 Box / Case



42-20WV-A



42-20WV

42-20WV (TUFF GRIP)
DISPOSABLE INDUSTRIAL
VINYL GLOVES

42-20WV-A (GREAT GLOVE)
DISPOSABLE INDUSTRIAL
VINYL GLOVES

- 100 Gloves by Weight Per Dispenser Box
- Powder Free
- Ambidextrous
- Gloves Available in S-XL
- 10 Box / Case

42-20WV-SV
STRETCH VINYL DISPOSABLE
GLOVES - INDUSTRIAL GRADE

42-40MV-SV
STRETCH VINYL DISPOSABLE
GLOVES - MEDICAL GRADE

- 100 Gloves by Weight Per Dispenser Box
- Powder Free
- Ambidextrous
- Gloves Available in S-XL
- 10 Box / Case



42-20WV-SV



42-40MV-SV



42-40MV-A
DISPOSABLE MEDICAL VINYL
GLOVES - POWDER FREE

- 100 Gloves by Weight Per Dispenser Box
- Ambidextrous
- Gloves Available in S-XL
- 10 Box / Case



43-10WN-A

43-10WN (TUFF GRIP)
DISPOSABLE INDUSTRIAL NITRILE GLOVES

43-10WN-A (GREAT GLOVE)
DISPOSABLE INDUSTRIAL NITRILE GLOVES

- 100 Gloves by Weight Per Dispenser Box
- 4 Mil Thickness
- Ambidextrous, Micro-Textured
- Gloves Available in S-XL
- Lightly Powdered
- 10 Box / Case



43-10WN



43-20WN-A



43-20WN

43-20WN (TUFF GRIP)
DISPOSABLE INDUSTRIAL NITRILE GLOVES

43-20WN-A (GREAT GLOVE)
DISPOSABLE INDUSTRIAL NITRILE GLOVES

- 100 Gloves by Weight Per Dispenser Box
- 4 Mil Thickness
- Ambidextrous, Micro-Textured
- Gloves Available in XS-2XL
- Powder Free
- 10 Box / Case

43-40MN-A
DISPOSABLE MEDICAL NITRILE GLOVES

- 100 Gloves by Weight Per Dispenser Box
- 4 Mil Thickness
- Ambidextrous, Micro-Textured
- Gloves Available in S-XL
- Powder Free
- 10 Box / Case



43-80WN-12

8 MIL



43-80WN

43-80WN
DISPOSABLE INDUSTRIAL NITRILE GLOVES - 9" LONG

43-80WN-12
DISPOSABLE INDUSTRIAL NITRILE GLOVES - 12" LONG

- 50 Gloves by Weight Per Dispenser Box
- 8 Mil Thickness
- Ambidextrous, Micro-Textured
- Gloves Available in S-XL
- Powder Free
- 10 Box / Case

6 MIL



NEW

43-60WN - 12
DISPOSABLE INDUSTRIAL NITRILE GLOVES - 12" LONG

- 100 Gloves By Weight
- 6 MIL Thickness
- 12" Long
- Gloves Available in S-XL
- Powder Free
- 10 Box / Case



41-10WL-10
LATEX GLOVES
LIGHTLY POWDERED (10 PIECES)

- One Size Fits All
- 10 Pieces / Pack
- 24 Packs / Bag
- 6 Bags / Case



42-10WV-10
VINYL GLOVES
LIGHTLY POWDERED (10 PIECES)

- One Size Fits All
- 10 Pieces / Pack
- 24 Packs / Bag
- 6 Bags / Case

42-20WV-GN-10
GREEN VINYL GLOVES POWDER FREE
(10 PIECES)

- One Size Fits All
- 10 Pieces / Pack
- 24 Packs / Bag
- 6 Bags / Case



41-0001
POLYETHYLENE
DISPOSABLE
GLOVES - HDPE
(100 PIECES)

- 1.25 MIL
- Size: S - XL

- 100 Pieces / Bag
- 100 Bags / Case



43-10WN-10
NITRILE GLOVES
LIGHTLY POWDERED (10 PIECES)

- One Size Fits All
- 10 Pieces / Pack
- 24 Packs / Bag
- 6 Bags / Case

ALSO AVAILABLE:

43-20WN-W
DISPOSABLE MEDICAL
WHITE NITRILE GLOVES
- POWDER FREE

43-40MN-PU
DISPOSABLE MEDICAL
PURPLE NITRILE GLOVES
- POWDER FREE

- Gloves Available in S - XL
- 100 Gloves by Weight Per Box
- 10 Box / Case

MGUGET
BLUE LATEX HIGH RISK
MEDICAL GRADE POWDER FREE
- 14 MIL
- 12" Long
- 50 Pieces / Box, 10 Boxes / Case

42-10WV-BU
DISPOSABLE INDUSTRIAL
BLUE VINYL GLOVES
- LIGHTLY POWDERED

42-20WV-BU
DISPOSABLE INDUSTRIAL
BLUE VINYL GLOVES
- POWDER FREE

42-20WV-GN
DISPOSABLE INDUSTRIAL
GREEN VINYL GLOVES
- POWDER FREE

- Gloves Available in S - XL
- 100 Gloves by Weight Per Box
- 10 Box / Case



41-0001-BX
POLYETHYLENE
DISPOSABLE GLOVES - HDPE

- 1.25 MIL
- Size: S - XL
- 500 Pieces / Box
- 20 Boxes / Case



90-103R-K
3 PLY EARLOOP MASK - BLUE

90-103R-K-PK
3 PLY EARLOOP MASK - PINK

90-103R-K-GN
3 PLY EARLOOP MASK - GREEN

90-103R-K-Y
3 PLY EARLOOP MASK - YELLOW

- Suitable for Oral, Dental Procedures, Beauty Supply
- Safe Lining, Fluid Repelling,
- Non-Irritating & Fiberglass Free
- 50 PCS / Box, 20 Boxes / Case



90-5020
NUISANCE DUST MASK - SINGLE STRAP

90-5020D
NUISANCE DUST MASK - DOUBLE STRAPS

- Adjustable Aluminum Nose Piece
- Fabric Wrapped Elastic Head Strap
- Polypropylene Spun Bond
- 50 Pieces / Box
- 20 Boxes / Case



90-103R-K-10
3 PLY EARLOOP MASK (10 PIECES)

- Suitable for Oral, Dental Procedures
- Safe Lining, Fluid Repelling, Non-Irritating & Fiberglass Free
- 10 Pieces / Pack
- 24 Packs / Bag
- 6 Bags / Case

90-9510NV
PARTICULATE RESPIRATORS

- Niosh 95 Approved
- Meets CDC Guidelines for TB Exposure Control
- Latex Free Double Head Strap
- Exhalation Valve
- Adjustable Aluminum Nose Piece
- 10 Pieces / Box
- 12 Boxes / Case



NEW

90-9510VCB
CARBON N95 RESPIRATOR WITH VALVE

- Niosh 95 Approved
- Meets CDC Guidelines for TB Exposure Control
- Latex Free Double Head Strap
- Exhalation Valve
- Adjustable Aluminum Nose Piece
- 10 PCS / Box, 12 Boxes / Case



90-9520NF
N95 PARTICULATE FLAT
RESPIRATOR

- Niosh 95 Approved
- Meets CDC Guidelines for TB Exposure Control
- Foldable Style
- 20 Pieces / Box
- 12 Boxes / Case



90-9520N
PARTICULATE RESPIRATORS

90-9530N
PARTICULATE RESPIRATORS

- Niosh 95 Approved
- Meets CDC Guidelines for TB Exposure Control
- Latex Free Double Head Strap
- Adjustable Aluminum Nose Piece
- 20 Pieces / Box
- 12 Boxes / Case



NEW

90-9520CB
CARBON N95 RESPIRATOR

90-9530CB
CARBON N95 RESPIRATOR

- Niosh 95 Approved
- Meets CDC Guidelines for TB Exposure Control
- Latex Free Double Head Strap
- Adjustable Aluminum Nose Piece
- 20 PCS / Box, 12 Boxes / Case

WISDOM

99-T8000-G



99-T8000-BU



99-T8000-C



WISDOM

99-T8000-BU - BLUE LENS

99-T8000-C - CLEAR LENS

99-T8000-CAF - CLEAR LENS (ANTI FOG)

99-T8000-G - GREY LENS

- Meets ANSI Z87.1, 2010 High Impact Requirement

- Anti Scratch

- 99.9% UV Protection

- 12 Pieces / Box, 25 Box / Case (300 Pieces)

HURRICANE

99-T8100-A



99-T8100-C



99-T8100-G



HURRICAN

99-T8100-A - AMBER LENS

99-T8100-C - CLEAR LENS

99-T8100-G - GREY LENS

99-T8100-CAF - CLEAR LENS (ANTI FOG)

99-T8100-IO - CLEAR LENS (INDOOR / OUTDOOR)

99-T8100-IR5 - INFRARED (GREEN IR5 LENS)

- Meets ANSI Z87.1, 2010 High Impact Requirement

- Adjustable Temples

- Anti Scratch

- 99.9% UV Protection

- 12 Pieces / Box, 25 Box / Case (300 Pieces)

STORM

99-T8200-BM



99-T8200-M



99-T8200-A



99-T8200-BU



99-T8200-CAF / 99-T8200-C



99-T8200-G



99-T8200-IO



99-T8200-SM



STORM

99-T8200-A - AMBER LENS

99-T8200-BM - BLUE MIRROR LENS

99-T8200-BU - BLUE LENS

99-T8200-C - CLEAR LENS

99-T8200-CAF - CLEAR LENS (ANTI FOG)

99-T8200-G - GREY LENS

99-T8200-IO - CLEAR LENS (INDOOR / OUTDOOR)

99-T8200-SM - SILVER MIRROR LENS

99-T8200-M - MOCHA LENS

99-T8200CBF - CLEAR BIFOCALS
(AVAILABLE POWER+ 1.0 / 1.5 / 2.0 / 2.5 / 3.0)

- Meets ANSI Z87.1, 2010 High Impact Requirement

- Anti Scratch

- 99.9% UV Protection

- 12 Pieces / Box, 25 Box / Case (300 Pieces)



TORNADO

99-T8300-C - CLEAR LENS

99-T8300-CAF - CLEAR LENS (ANTI FOG)

99-T8300-G - GREY LENS

- Meets ANSI Z87.1, 2010 High Impact Requirement
- Anti Scratch
- 99.9% UV Protection
- 12 Pieces / Box, 25 Box / Case (300 Pieces)



SPEED

99-T8400-G

SPEED

99-T8400-C - CLEAR LENS

99-T8400-CAF - CLEAR LENS (ANTI FOG)

99-T8400-G - GREY LENS

- Meets ANSI Z87.1, 2010 High Impact Requirement
- Anti Scratch
- 99.9% UV Protection
- 12 Pieces / Box, 25 Box / Case (300 Pieces)



VIPOR

99-T8500-A

99-T8500-BM

99-T8500-C

99-T8500-CAF

99-T8500-G

99-T8500-SM

VIPOR

99-T8500-A - AMBER LENS

99-T8500-BM - BLUE MIRROR LENS

99-T8500-C - CLEAR LENS

99-T8500-CAF - CLEAR LENS (ANTI FOG)

99-T8500-G - GREY LENS

99-T8500-SM - SILVER MIRROR LENS

- Meets ANSI Z87.1, 2010 High Impact Requirement
- Anti Scratch
- 99.9% UV Protection
- 12 Pieces / Box, 25 Box / Case (300 Pieces)

WARRIOR

99-T8600-G



99-T8600-C



WARRIOR

99-T8600-C - CLEAR LENS

99-T8600-CAF - CLEAR LENS (ANTI FOG)

99-T8600-G - GREY LENS

- Meets ANSI Z87.1, 2010 High Impact Requirement
- Anti Scratch
- 99.9% UV Protection
- 12 Pieces / Box, 25 Box / Case (300 Pieces)

RAZOR

99-T8700-C



99-T8700-G



RAZOR

99-T8700-C - CLEAR LENS

99-T8700-CAF - CLEAR LENS (ANTI FOG)

99-T8700-G - GREY LENS

- Meets ANSI Z87.1, 2010 High Impact Requirement
- Anti Scratch
- 99.9% UV Protection
- 12 Pieces / Box, 25 Box / Case (300 Pieces)

WOLVERINE

99-T8800-G



99-T8800-A



99-T8800-BM



99-T8800-C



99-T8800-CAF



99-T8800-IO



99-T8800-BU



WOLVERINE

99-T8800-A - AMBER LENS

99-T8800-BM - BLUE MIRROR LENS

99-T8800-BU - BLUE LENS

99-T8800-C - CLEAR LENS

99-T8800-CAF - CLEAR LENS (ANTI FOG)

99-T8800-G - GREY LENS

99-T8800-IO - CLEAR LENS (INDOOR / OUTDOOR)

- Meets ANSI Z87.1, 2010 High Impact Requirement
- Anti Scratch
- 99.9% UV Protection
- 12 Pieces / Box, 25 Box / Case (300 Pieces)



TORPEDO

99-T8900-C



99-T8900-G



TORPEDO

99-T8900-C - CLEAR LENS

99-T8900-CAF - CLEAR LENS (ANTI FOG)

99-T8900-G - GREY LENS

- Meets ANSI Z87.1, 2010 High Impact Requirement
- Anti Scratch
- 99.9% UV Protection
- 12 Pieces / Box, 25 Box / Case (300 Pieces)

LIGHTNING

99-T9000-C



99-T9000-G



LIGHTNING

99-T9000-C - CLEAR LENS

99-T9000-G - GREY LENS

- Meets ANSI Z87.1, 2010 High Impact Requirement
- Anti Scratch
- 99.9% UV Protection
- 12 Pieces / Box, 25 Box / Case (300 Pieces)

LEGEND



99-T9300BK-C

99-T9300BK-G



99-T9300BK-CAF



99-T9300R-G



99-T9300R-C



LEGEND - BLACK FRAME

99-T9300BK-C - CLEAR LENS

99-T9300BK-CAF - CLEAR LENS (ANTI FOG)

99-T9300BK-G - GREY LENS

LEGEND - RED FRAME

99-T9300R-C - CLEAR LENS

99-T9300R-GAF - CLEAR LENS (ANTI FOG)

99-T9300R-G - GREY LENS

- Meets ANSI Z87.1, 2010 High Impact Requirement
- Anti Scratch
- 99.9% UV Protection
- 12 Pieces / Box, 25 Box / Case (300 Pieces)

BLADE

NEW



99-T9100-C

99-T9100-IO



99-T9100-G



99-T9100-M



99-T9100-BM



BLADE

99-T9100-BM - BLUE MIRROR LENS

99-T9100-C - CLEAR LENS

99-T9100-CAF - CLEAR LENS (ANTI FOG)

99-T9100-G - GREY LENS

99-T9100-IO - CLEAR LENS (INDOOR / OUTDOOR)

99-T9100-M - MOCHA LENS

- Meets ANSI Z87.1, 2010 High Impact Requirement
- Anti Scratch
- 99.9% UV Protection
- 12 Pieces / Box, 25 Box / Case (300 Pieces)



VISITOR SPECS
99-V8000-C - CLEAR LENS

- Clear Lens
- 12 Pieces / Box, 12 Box / Case (144 Pieces)



DISPLAY
99-RACK

- Fits 6 Pairs
- 2 Displays / Case

SAFETY GLASSES HOLDER
99-TB1

- Black Cord
- 12 Pieces / Bag, 200 Bags / Box

CHALLENGER SAFETY GOOGLES

CHALLENGER SAFETY GOOGLES

NEW

99-G8800-G



99-G8800-A



99-G8800-C



SAFETY GOOGLES

99-G8800-A - AMBER
 99-G8800-C - CLEAR
 99-G8800-CAF - ANTI FOG
 99-G8800-G - GREY LENS

- Meets ANSI Z87.1, 2010 High Impact Requirement
- With Black Elastic Adjustable Strap
- Insert Foam for Comfort Fit
- 12 Pieces / Box, 12 Boxes / Case (144 PCS / Case)

99-TB1



GOGGLES
99-G8900 - DIRECT VENTILATION
99-G8901 - INDIRECT VENTILATION

- Safety Goggle
- Clear Lens
- 12 Pieces / Box, 12 Box / Case (144 Pieces)



GOGGLES
99-G8901CAF - INDIRECT VENTILATION (ANTI-FOG)
99-G8901CAF-GN - INDIRECT VENTILATION (ANTI-FOG)

- Safety Goggle
- Clear Lens
- 12 Pieces / Box, 12 Box / Case (144 Pieces)

SURVEYOR'S VEST

SIZE	S	M	L	XL	2X	3X	4X	5X
WIDTH	40" - 42"	42" - 44"	44" - 46"	47" - 49"	50" - 52"	53" - 55"	56" - 58"	59" - 61"
LENGTH	25"	25"	26"	26"	27"	28"	28"	29"

ANSI CLASS II

SIZE	S	M	L	XL	2X	3X	4X	5X
WIDTH	36" - 38"	40" - 42"	44" - 46"	48" - 50"	52" - 54"	56" - 58"	60" - 62"	64" - 66"
LENGTH	26"	28" - 28.5"	28" - 28.5"	28" - 28.5"	28" - 28.5"	29" - 29.5"	29" - 29.5"	30" - 30.5"

ANSI CLASS III

SIZE	S	M	L	XL	2X	3X	4X	5X
WIDTH	36" - 38"	40" - 42"	44" - 46"	48" - 50"	52" - 54"	56" - 58"	60" - 62"	64" - 66"
LENGTH	26"	27" - 28"	28"	28"	28" - 29"	29"	29.5" - 30"	30"

ANSI / ISEA 107-2004 STANDARD

ANSI stands for American National Standards Institute. Together with ISEA, International Safety Equipment Association developed a standard for high-visibility clothing. They are non-governmental agencies but this particular standard has been adapted by many states. It establishes many details used in the production for high visibility garments. There are 3 classes of apparel involved.

3 CLASSES OF APPAREL:

CLASS I

Lower visibility requirements in environments where traffic doesn't exceed 25MPH.

Examples of workers in **CLASS I**:

- People retrieving shopping carts from parking lots
- Workers exposed to warehouse equipment traffic
- Parking lot attendants
- Sidewalk maintenance workers

CLASS II

Required when worker's attention is distracted from coming traffic and tasks are done where traffic speed is between 25-50MPH. Also intended for use in work places where greater visibility is required and when inclement weather conditions and complex background is present.

Examples of workers in **CLASS II**:

- Accident site investigators
- Airport baggage handlers
- Airport ground crews
- Cargo loading operators
- Emergency response crews
- Forestry operation workers
- High volume parking crews
- Law enforcement personnel
- Railway operators
- Recycling operators
- Roadway construction workers
- School crossing guards
- Survey teams
- Utility workers
- Waste workers

CLASS III

Required where traffic speed exceeds 50 MPH, also where high risk tasks are performed and where the workers must be easily identifiable as a person through a full range of motion at a minimum of 390 meters (1280 feet). Night crew are especially required.

Examples of workers in **CLASS III**:

- Emergency response crews
- Survey teams
- Utility workers
- Roadway construction workers



BACK VIEW



BACK VIEW

98-0300-O
ORANGE MESH

98-0301-G
GREEN MESH

- High Visibility with 100% Fluorescent Polyester
- No Reflective Stripes
- Mesh Front and Back with Elastic Sides
- Front Velcro Closure
- One Size Fits All
- Case Pack: 10/100

98-0300-O
ORANGE MESH

98-0301-G
GREEN MESH



BACK VIEW



BACK VIEW

98-1200-O
ORANGE MESH

98-1201-G
GREEN MESH

- High Visibility with 100% Fluorescent Polyester
- 2" Vertical High Contrast Reflector
- Both Front and Back
- Mesh Front and Back with Elastic Sides
- Front Velcro Closure
- One Size Fits All
- Case Pack: 10/100

98-1200-O
ORANGE MESH

98-1201-G
GREEN MESH





BACK VIEW

98-1300-O
ORANGE MESH / YELLOW REFLECTOR



BACK VIEW

98-1301-G
GREEN MESH / ORANGE REFLECTOR



BACK VIEW

98-1301-GS
GREEN MESH / SILVER REFLECTOR

INFORMATION FOR THE GENERAL PURPOSE MESH VESTS

All Purpose Mesh Vests are light weight, one size fits all and cost effective products with durable fluorescent color which makes them easily seen day or night for visibility and safety.

Mesh offers breathability and ventilation therefore is great for warm weather. Also helps people who perspire heavily.

98-1300-O
ORANGE MESH /
YELLOW REFLECTOR

- High Visibility with 100% Fluorescent Polyester
- 1" Vertical Reflective Stripes
- Both Front and Back

98-1301-G
GREEN MESH /
ORANGE REFLECTOR

- Mesh Front and Back with Elastic Sides
- Front Velcro Closure
- One Size Fits All
- Case Pack: 10/100

98-1301-GS
GREEN MESH /
SILVER REFLECTOR



BACK VIEW



BACK VIEW

NEW

98-2500-O
ORANGE - CLASS II T-SHIRT

98-2501-G
GREEN - CLASS II T-SHIRT

- 100% Polyester With Silver Reflectors
- One Pocket
- High Visibility with 100% ANSI Fluorescent
- Solid Front and Back
- 2" ANSI Silver Reflective Stripes
- Sizes: S - 4XL
- Case Pack: 10/30



98-2500-O
ORANGE CLASS II T-SHIRT



98-2501-G
GREEN CLASS II T-SHIRT

INFORMATION FOR THE ANSI CLASS II VESTS

(Most Commonly Used)

C LASS II vests are required for workers who are on or near roadways also when inclement weather reduces visibility, in 25-50MPH speed zone, or complex background is present, worker's attention is distracted from oncoming traffic.

- 5 POINT BREAKAWAY -



98-2601G
LIME CLASS II 5-POINT BREAKAWAY VEST



BACK VIEW

NEW

98-2601G
LIME - CLASS II 5-POINT
BREAKAWAY VEST MESH

- 100% Polyester With 2" ANSI Silver Reflectors
- 2 Pockets + 1 Side Small Pocket
- High Visibility with 100% ANSI Fluorescent
- Lime Tricot Vest
- Mesh Front and Back
- Velcro Front, also on 2 Sides and 2 Shoulders for Easy Breakaway
- Sizes: S - 4XL
- Case Pack: 10/30





BACK VIEW



BACK VIEW

98-2700-O
ORANGE CLASS II VEST

98-2701-G
LIME CLASS II VEST

98-2700-O
ORANGE CLASS II VEST

98-2701-G
LIME CLASS II VEST

- Two 1" Silver Reflector Stripes Over 4 1/2" Lime or Orange Fluorescent Vertical and Horizontal Bands
- Solid Front and Back
- Velcro Closure for Easy Break Away
- Clear Plastic Card Holders: Back (4 1/2"x11 1/2") & Front (3 1/2"x5 1/2")
- Multi Pockets Inside & Upper Left
- Sizes: S - 4XL
- Case Pack: 10/30



BACK VIEW



BACK VIEW

98-2800-O
ORANGE CLASS II VEST

98-2801-G
LIME CLASS II VEST

98-2800-O
ORANGE CLASS II VEST

98-2801-G
LIME CLASS II VEST

- High Visibility with 100% Polyester ANSI Fluorescent
- With 2" Silver Reflector Vertical and Horizontal Bands
- Mesh Front and Back for Ventilation
- Zipper Front with Black Binding
- Multi Pockets
- Sizes: S - 4XL
- Case Pack: 10/30



BACK VIEW


98-2900-O
ORANGE CLASS II VEST


BACK VIEW


98-2901-G
LIME CLASS II VEST

98-2900-O
ORANGE CLASS II VEST

98-2901-G
LIME CLASS II VEST

- High Visibility with 100% Polyester ANSI Fluorescent
- With 2" Silver Reflector in 1 Vertical and 2 Horizontal Bands
- Solid Front and Mesh Back
- Zipper Front with Lime / Orange Binding
- Multi Pockets
- Sizes: S - 4XL
- Case Pack: 10/30



BACK VIEW


98-2980-O
ORANGE CLASS II VEST


BACK VIEW


98-2981-G
LIME CLASS II VEST

NEW

98-2980-O
ORANGE CLASS II VEST

98-2981-G
LIME CLASS II VEST

- High Visibility with 100% ANSI Fluorescent
- With 2" Silver Reflector on 3 1/2" Lime or Orange Fluorescent
- Solid Front and Mesh Back
- Zipper Front with Mic Tab on Both Sides
- 4 Outer Pockets & 2 Inner Pockets
- Sizes: S - 4XL
- Case Pack: 10/30



98-5800-O
ORANGE SURVEYOR'S VEST



98-5801-G
LIME SURVEYOR'S VEST

98-5800-O
ORANGE SURVEYOR'S VEST

98-5801-G
LIME SURVEYOR'S VEST

- With 1" White Reflector on 2" Lime or Orange Fluorescent
- High Visibility with 100% Fluorescent Polyester
- Solid Front Mesh Back for Ventilation
- 2" Wide High Contrasting Reflective Stripes in Vertical and Horizontal
- Zipper Front Closure
- Multi Pockets
- Sizes: S - 4XL
- Case Pack: 10/30

INFORMATION FOR SURVEYORS' VESTS MULTI POCKETS

Multiple pockets are offered in Surveyors' Vest: Upper left with 4-division pencil pockets, upper right 2-division pockets, two outside flap pockets with velcro closure. 360° reflectivity provides full body outline. Non-Conductive nylon zipper front closure.



98-5900-O
ORANGE SURVEYOR'S VEST



98-5901-G
LIME SURVEYOR'S VEST



98-5900-O
ORANGE SURVEYOR'S VEST

98-5901-G
LIME SURVEYOR'S VEST

- With 1" White Reflector on 2" Lime or Orange Fluorescent Bands
- High Visibility with 100% Fluorescent Polyester
- Solid Front & Back
- 2" Wide High Contrasting Reflective Stripes in Vertical and 2 Horizontal
- Zipper Front Closure
- Multi Pockets
- Sizes: S - 4XL
- Case Pack: 10/30



BACK VIEW



BACK VIEW

NEW

98-3600-O
ORANGE - CLASS III VEST

98-3601-G
LIME - CLASS III VEST

- High Visibility with 100% ANSI Fluorescent
- Lime or Orange Tricot Vest
- Mesh Front and Back
- 2" ANSI Silver Reflective Stripes over 3" Orange or Lime Fluorescent
- Zipper Front with Black Binding
- Multi Pockets
- Sizes: S - 4XL
- Case Pack: 10/30



98-3600-O
ORANGE CLASS III VEST



98-3601-G
LIME CLASS III VEST



BACK VIEW



BACK VIEW



98-3800-O
ORANGE CLASS III VEST



98-3801-G
LIME CLASS III VEST

98-3800-O
ORANGE CLASS III VEST

98-3801-G
LIME CLASS III VEST

- High Visibility with 100% ANSI Fluorescent
- Lime or Orange Tricot Vest
- Solid Front and Back
- 2" ANSI Silver Reflective Stripes over 3" Orange or Lime Fluorescent
- Zipper Front with Black Binding
- Multi Pockets
- Sizes: S - 4XL
- Case Pack: 10/30

	CLASS I	CLASS II	CLASS III
Minimum number of yards per retroreflective material width	4.3yds of 1 in. width 3.1yds of 1.372 in. width 2.15yds of 2 in. width	4yds of 1.375 in. width 2.8yd of 2 in. width	4.3yds of 2 in.(50mm) width
Minimum width of retroreflective material	1 or 2 in. combined performance material	1.375 in. (35mm)	2 in. (50mm)
Photometric performance	Level 2 (Table 5) or Level 1 (Table 6)	Level 2 (Table 5) or Level 1 (Table 6)	Level 2 (Table 5) or Level 1 (Table 6)
Combined performance material used without background material	310 sq in. (0.20sq meter)	N/A	N/A
Background material	217 sq in.(0.14 sq meter)	775 sq in.(0.50sq meter)	1240 sq in.(0.80sq meter)
Retroreflective or combined performance material used in conjunction with background material	155 sq in.(0.10sq meter)	201 sq in. (0.13sq meter)	310 sq in.(0.20sq meter)

Minimum Areas of Visible Material ANSI / ISEA 107 - 2004

(Source: 3M personal Safety Products, 3M Occupational Health and Environmental Safety Division)

INFORMATION FOR THE ANSI CLASS III VESTS

C LASS III vests are required for workers where traffic exceeds 50MPH, where high risk tasks are performed. Also when workers who need to be conspicuous through the full range of motions at a minimum distance of 1,280 feet. Highest visibility provided for workers in high risk areas / situations who need fully range body motions. Generous armholes provided for comfortable fit, contrasting stripes for extra day & night visibility and multiple pockets are provided inside upper left & right. 360° provides full body outline. Non-Conductive nylon zipper front closure.



98-3500-O
BACK VIEW



98-3501-G
BACK VIEW

NEW

98-3500-O
ORANGE - CLASS III
LONG SLEEVE T-SHIRTS

98-3501-G
LIME - CLASS III
LONG SLEEVE T-SHIRTS

- 100% Polyester With Silver Reflectors
- High Visibility with 100% ANSI Fluorescent
- 2" ANSI Silver Reflective Stripes
- 1 Side Pocket
- Sizes: M - 4XL
- Case Pack: 10/30



98-3500-O
ORANGE CLASS III LONG SLEEVES



98-3501-G
LIME CLASS III LONG SLEEVES



98-3011-G
LIME GREEN WATER RESISTANT JACKET

NEW

98-3011-G
FLUORESCENT LIME GREEN
CLASS III WATER RESISTANT
JACKET

- High Visibility with 100% ANSI Fluorescent Lime Green
- Elastic cuffs and waistband, 2" wide level 2 ANSI-certified silver retroreflective stripes
- Weather Proof Outer Shell
- Hidden detachable hood with drawstrings and stoppers
- Zipper Front With Snap Buttons
- Multi Pockets
- Sizes: M - 5XL
- 10 Pieces / Case



Back View



98-3001-G
LIME GREEN CLASS III BOMBER JACKET



Inner Lining



Back View

NEW

98-3001-G
LIME GREEN CLASS III WITH REMOVABLE
FLEECE LINING BOMBER JACKET

- 3 In 1 Jacket with Detachable Fleece Lining
- High Visibility with 100% ANSI Fluorescent
- Solid Front and Back
- 2" ANSI Silver Reflective Stripes
- Removable Hood
- Zipper Front with Snap Buttons
- Multi Pockets
- Sizes: M - 5XL
- 10 Pieces / Case



NYLON HAIRNET - WHITE

00-0018W - 18"

00-0021W - 21"

00-0024W - 24"

00-0026W - 26"

- 100% Soft Nylon
- 1/8" Honeycomb Holes Pattern
- 100 / Poly Bag, 10 Bags / Case



BLUE BOUFFANT CAPS

WHITE BOUFFANT CAPS

00-1119B - 19"

00-1119W - 19"

00-1121B - 21"

00-1121W - 21"

00-1124B - 24"

00-1124W - 24"

- Polypropylene Spun Bond
- Light Weight, Secure and Comfortable Fit
- Available Sizes: 19", 21", 24"
- Pleated Style Available in 21"
- 100 / Poly Bags
- 5 Bags / Case or 10 Bags / Case

**00-0810
BEARD COVERS**

- Polypropylene Spun Bond
- Light Weight, Secure and made for Comfort
- 100 / Poly Bag
- 10 Bags / Case

**00-0820
BEARD COVERS - NYLON NET**

- White Nylon Beard Net
- 100 / Poly Bag
- 10 Bags / Case



**00-8002-L(XL)-400
SHOE COVER**

- Non Skid Tread
- Blue Polypropylene Spun Bond
- Sizes: L & XL
- 100 / Dispenser, 4 Dispenser / Case



TREAD PATTERN



**00-617SH
SPRAY HOOD
(SPRAY SOCK)**

- 100% Cotton
- Size: 6" x 17"
- One Size Fits All
- 12 Pieces / Bag
- 50 Bags / Case

**98-911B
PREMIUM
BACK SUPPORT**

- Size: S - 3XL
- 24 / Case



98-911B

**98-911
ECONOMICAL
BACK SUPPORT**



98-911



NEW

**00-618NH
HOOD SOCK**

- 100% Cotton
- White Color
- One Size Fits All
- 12 PCS / Bag,
- 48 PCS / Case



10-2010-W
18" POLYPROPYLENE SLEEVES

10-2010-W-E
18" POLYPROPYLENE SLEEVES
- ECONOMICAL GRADE

- Elastic Ends
- White
- 100 / Bag,
- 5 Bags / Case



10-2011-W
18" POLYETHYLENE OVER
PP SLEEVES

- Elastic Ends
- White
- 100 / Bag, 5 Bags / Case



10-2009-BU
BLUE - 18" PE SLEEVES
(shown above)



10-2009-C
CLEAR - 18" PE SLEEVES



10-2009-W
WHITE - 18" PE SLEEVES



10-2009-Y
YELLOW - 18" PE SLEEVES

- Elastic Ends
- 18" Polyethylene Sleeves
- 200 / Bags, 10 Bags / case



10-2007BD
BLUE DENIM SLEEVES

- Price by Pair
- Standard Weight
- 18" in Length
- Elastic Ends
- 12 Pairs / Bag,
- 6 Bags / Case



10-2020
18" TERRY CLOTH SLEEVES

- Price by each
- 18" in Length
- Semi-Cut Resistant
- Elastic on Both Ends
- 24 Pieces / Bag,
- 144 Pieces / Case



10-2008V-BU
VINYL (PVC) SLEEVES - BLUE
(shown above)



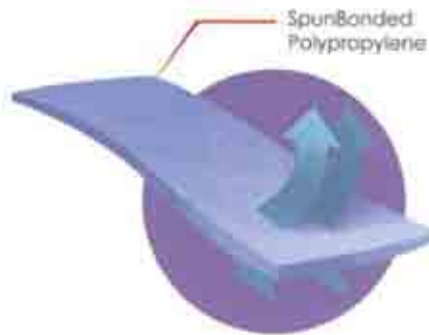
10-2008V-Y
VINYL (PVC) SLEEVES - YELLOW



10-2008V-W
VINYL (PVC) SLEEVES - WHITE

- Price by Dozen Pairs
- 8 MIL
- 18" in Length
- Elastic Ends
- 12 Pairs / Bag, 12 Bags / Case

PP MATERIAL



SPECIFICATION:

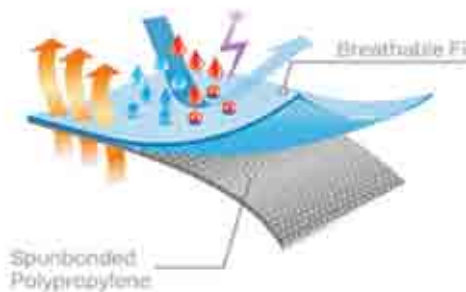
Spunbonded polypropylene is a lightweight, breathable fabric that provides economical protection against non-hazardous, grimy-work environment applications.

APPLICATION:

Spunbonded polypropylene is appropriate for wear in the non-toxic workplace and is a low-cost solution for protecting workers in dirty environments.

MICROPOROUS MATERIAL

Fabric Construction



DESCRIPTIONS:

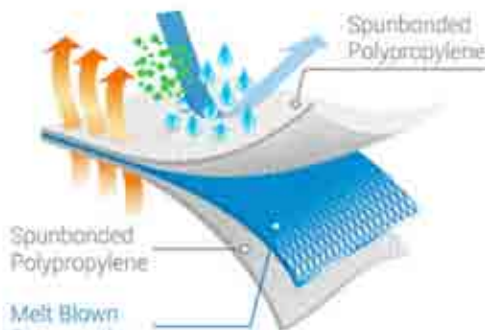
1. Against radioactive contamination.
2. Anti biological hazard & infective agents.

APPLICATION:

Asbestos, Automotive, Biological Hazards, Chemical Handling, Clean Room, Decontamination, Disease / Disaster Management, Hazardous Material, Industrial Clean Up, Medical / Emergency, Military, Oil Handling / Tank Cleaning, Paint Spray, Printing, Powder Coating & Pharmaceutical.

SMS MATERIAL

Fabric Construction



DESCRIPTION:

1. Higher breathability.
2. Good protection.
3. Excellent particle barrier.
4. Stitch with Tape Seam.

APPLICATION:

Asbestos Handling, Automotive, Civil Protection, Construction, Decorative Work & Waste Management.





PP COVERALL

00-8052 - STANDARD WEIGHT

- Polypropylene Spun Bond
- No Hood, No Boots
- Latex-Free Elastic Wrists & Ankles
- Zipper Front
- Sizes: L - 3XL
- 25 Pieces / Case



PP LAB COAT

**00-9100
LAB COAT - 2 POCKETS**

**00-9100NP
LAB COAT - NO POCKET**

- Polypropylene Spun Bond
- Elastic Wrist
- Weight: 30g
- Snap Front
- Size: M - 3XL
- 30 Pieces / Case or 50 Pieces / Case



**MICROPOROUS FILM OVER
SPUN-BOND PP COVERALL**

00-KG1412

- With Collar & Elastic Waist,
No Elastic on Cuffs & Ankles

00-KG1413

- With Hood, No Boots,
Elastic Wrist, Waist & Ankles.

00-KG1414

- With Hood & Boots, Elastic
Cuffs, No Elastic on Waist
& Ankles.

- Zipper
Front with
Storm Flap
- Weight:
65g / M²
- Size:
S-4XL
- 25 Pieces
/ Case



PP OVERALL WITH HOOD & BOOTS

00-8060 - MEDIUM WEIGHT

- Coverall
- Latex-Free Elastic Wrists
- Zipper Front
- Sizes: L - 3XL
- 25 Pieces / Case



**00-9110
MICROPOROUS LAB COAT
(NO POCKET)**

**00-9120
SMS LAB COAT (WITH 2 POCKETS)**

- Knitted Collar
and Wrist
- With 4 Plastic
Buttons
- Weight: 60g
- Size: M-3XL
- 30 Pieces / Case



00-SMS1412

- With Collar & Elastic Waist,
No Elastic on Cuffs & Ankles

00-SMS1414

- With Elastic Cuffs, Boots & Hood.
No Elastic on Waist & Ankles

- Zipper Front with
Storm Flap
- Weight: 50g / M²
- Size: S-4XL
- 25 Pieces / Case



10-3545BU
PVC APRON 35" X 45"

- Blue PVC Apron
- 6 MIL
- 50 Pieces / Case



10-3545P-CL
PVC APRON 35" X 45"

- Clear PVC Apron
- 10 MIL
- 48 Pieces / Case



POLYETHYLENE (PE) APRON- 28" x 46"
FULL SIZE BIB FROM NECK TO KNEE

- | | |
|-----------------------|---------------------|
| 10-2846 | 10-2846BP-2 |
| - 1.2 MIL Thickness | - 2 MIL Thickness |
| - Individually Packed | - Bulk Packaging |
| - 100 Pieces / Box, | - 100 Pieces / Bag, |
| 10 Boxes / Case | 10 Bags / Case |



10-4547-BU
PVC / POLYESTER APRON 35" X 45"

- Blue PVC / Polyester Apron
- 35 MIL
- 48 Pieces / Case



10-4547-Y
PVC / POLYESTER APRON 35" X 45"

- Yellow PVC / Polyester Apron
- 35 MIL
- 48 Pieces / Case



10-2836BD2P
BLUE DENIM APRON 28" X 36"

- With 2 Pockets
- Individually Packed
- 12 Pieces / Bag, 72 Pieces / Case

PROTECTIVE RAINWEAR

Our rainwear provides long lasting and durable usage with comfort.

The complete coverage suits give a wide variety of job applications. Besides ensuring users will stay dry, our rainwear also provides the reliable solution for weathering storms to environmental clean-ups.

10-480P-Y PONCHO PVC YELLOW

- 0.10 mm Thickness
- 52" x 80"
- One Size Fits All
- 48 Pieces / Case



10-500 PVC / POLYESTER 2 PIECE RAINCOAT

- 0.35 mm Thickness
- 48" in Length
- Detachable Hood
- Size: M - 3XL
- 12 Pieces / Case



10-710 PVC / POLYESTER 3 PIECES RAINSUIT - DETACHABLE HOOD

10-600 PVC / POLYESTER 2 PIECES RAINSUIT - ATTACHED HOOD

- 0.35mm Thickness
- Jacket with Detachable Hood & Overall Pants
- Jacket with Corduroy Collar
- Zipper Front with Fly Front Snap
- Heavy PVC Reinforced Joint
- Available in Sizes: M - 4 XL
- 10 Pieces / Case

STRETCH FILM

99-A80-1

- 18" X 1500 FT / 80 GAUGE

99-A80

- 18" X 1100 FT / 80 GAUGE

99-A50

- 15" X 1500 FT / 80 GAUGE (available upon request only)

- Great Quality

- 4 pieces / Case



PACKING TAPE

99-T000 - 2" X 55 YD - CLEAR

99-T000B - 2" X 55 YD - TAN

99-T001 - 2" X 110 YD - CLEAR

99-T001-2J - 2" X 110 YD - CLEAR (Better Quality)

99-T003 - 2" X 110 YD - TAN

99-T004 - 3" X 110 YD - CLEAR

99-T1000 - 2" X 1000 YD - CLEAR

99-T1000B - 2" X 1000 YD - TAN

- Great Adhesive Quality Tape

- All Purpose Packing Tape

- 36 / Case for 2" Tapes

- 24 / Case for 3" Tapes

- 72 / Case for 2" x 55 YD Tapes

- 6 / Case for 2" x 1000 YD Tapes

99-T005-1



99-T005-2



99-T005-3BU

PAINTER'S TAPE
(BLUE MASKING TAPE)

99-T005-75BU - 3/4" X 50 YD

99-T005-1BU - 1" X 50 YD

99-T005-1.5BU - 1.5" X 50 YD

99-T005-2BU - 2" X 50 YD

99-T005-3BU - 3" X 50 YD

- Great Quality

- 36 Pieces / Case

- 24 Pieces / Case (3" Only)

MASKING TAPE

99-T005 - 2" X 30 YD

99-T005-75 - 3/4" X 50 YD

99-T005-1 - 1" X 50 YD

99-T005-1.5 - 1.5" X 50 YD

99-T005-2 - 2" X 50 YD

99-T005-3 - 3" X 50 YD



ELECTRICAL TAPE
99-T008 - BLACK

- 3 Rolls of 18 MM x 18 YD
- 36 Packs / Case

DUCT TAPE

99-T006G - 2" X 10 YD - GREY ONLY

99-T007A - 2" X 10 YD - 4 ASST. COLORS



- Great Quality Duct Tapes
- 36 Pieces / Case

99-T007-A



99-T006-G



DUCT TAPE



99-T009A - 2" x 60 YD - 4 ASST. COLORS
 (Black, Red, Blue, White)



99-T009G - 2" x 60 YD - GREY ONLY



99-T009BK - 2" x 60 YD - Black ONLY



99-T009-BU - 2" x 60 YD - BLUE ONLY



99-T009-GN - 2" x 60 YD - GREEN ONLY



99-T009-R - 2" x 60 YD - RED ONLY



99-T009-W - 2" x 60 YD - WHITE ONLY



99-T009-Y - 2" x 60 YD - YELLOW ONLY

- Great Quality Duct Tapes
- 24 Pieces / Case



VINYL MARKING TAPE

-  99-T010BK - 2" X 45 YD - **BLACK**
-  99-T010R - 2" X 45 YD - **RED**
-  99-T010Y - 2" X 45 YD - **YELLOW**
-  99-T010W - 2" X 45 YD - **WHITE**
-  99-T010BU - 2" X 45 YD - **BLUE**
-  99-T010O - 2" X 45 YD - **ORANGE**
-  99-T010GN - 2" X 45 YD - **GREEN**

- Great Quality
- 36 pieces / Case



VINYL MARKING TAPE

- 99-T010YBK - 2" X 45 YD **YELLOW / BLACK**
- 99-T010RW - 2" X 45 YD - **RED / WHITE**

- Known as Marking Tape
- Great Quality Vinyl Tape
- 36 pieces / Case



TAPE DISPENSER

- 99-T00-TP-2 (2 Inches)
- 99-T00-TP-3 (3 Inches)

- 1 piece / box,
24 pieces / Case



CAUTION

CAUTION TAPE

- 99-T0911-2 99-T0911-3
- 3" X 300 Feet - 3" X 1000 Feet
- 1.5 Mil - 1.5 Mil
- 48 pieces / Case - 24 pieces / Case



PRECAUCION

CAUTION TAPE (SPANISH)

- 99-T0911-3P
- "PRECAUCION" TAPE
- 3" X 1000 Feet
- 1.5 Mil
- 24 pieces / Case



DANGER

DANGER TAPE

- 99-T0811D-2 99-T0811D-3
- 3" X 300 Feet - 3" X 1000 Feet
- 1.5 Mil - 1.5 Mil
- 48 pieces / Case - 24 pieces / Case

Terms, Conditions & Additional Services

■ We Ship

We Ship F.O.B. origin, best way unless otherwise requested. Handling charges maybe added to your order. Items temporarily backordered will be shipped upon request only.

■ Terms

N30 days to accounts with established credit. Open account is available to qualified customers.

We accept Master Card, VISA, Amex, and Discover. Service Charge will apply.

■ Inventory

Not all items represented in this catalog are in stock. In limited situations, some items may need to be purchased in vendor's standard packaging. In other words some items require MOQ.

■ Returns & Exchange

Items to return or exchange must be done within 10 Business Days after received & maybe subject to 10% Restocking Fee. Please contact us for a Return Authorization Number prior to return. Special order items and custom made products are non-returnable except for defective quality. Shipping charges should be prepaid unless otherwise arranged in advance. All merchandise must be carefully packed and will be subject to charge if not in saleable condition.

■ Damage & Shortage Claims

We give great attention to processing, checking and packing your order. On rare occasions, a package may be damaged or lost in transit.

If a UPS or common carrier shipment is damaged, please note the damage on the delivery receipt and contact us for assistance with filing a claim.

■ Limited Warranty

We make no representation or warranty, expressed or implied, arising out of, or in connection with, the sale, manufacture, delivery or use of any product offered in this catalog or by other means.

■ Blanket Purchase Orders

Your blanket purchase order instructs us to ship your frequently used safety products to you on a regular basis. You just tell us when & where you need the product shipped, and the quantities needed. One purchase order is all you need to save time and inventory space. Call us for more details. Some restrictions may apply.

■ Customized Quotes for Volume Purchase

Give us a call and we will provide you a special quote for your special volume purchase.

■ Electronic Fund Transfer/Direct Deposit

We now accept Electronic Fund Transfer(EFT), and Direct Deposit. Call us to make arrangements.

■ Mail / Email / Fax Order Forms

Please call us, order forms are available for you to use.

■ Hangtags

We offer hang-tagging service. All hang tags are with UPC codes, please contact us for details.

■ E-Catalog

Browsing our products is just a click away. Our user-friendly interface allows you to find what you are looking for.

Please visit us at www.MGgloves.com.

■ Drop Shipments

Our drop shipment service will save you time & money, it can be done by our blind shipment Bill of Lading or your packing slip if preferable.

■ Direct Importing

For any high-volume distributors looking for great value without compromising quality, direct importing is the key to decrease your costing.

Don't forget the added value for direct import on private labeling & banding service.

ITEM NUMBER	PAGE	ITEM NUMBER	PAGE	ITEM NUMBER	PAGE
00-0018W	54	10-2836BD2P	58	30-8902	13
00-0021W	54	10-2846	58	31-4013	16
00-0024W	54	10-2846BP-2	58	31-4013KV	16
00-0026W	54	10-3545-BU	58	31-4014	16
00-0810	54	10-3545P-CL	58	31-4014EC	16
00-0820	54	10-4547-BU	58	31-4014-LH	16
00-1119B-500	54	10-4547-Y	58	31-4015	16
00-1121B-500	54	10-480P-Y	59	31-4016	16
00-1121W-1000/P	54	10-500 -S-3XL	59	31-4016DBKV	16
00-1121W-500	54	10-600	59	32-1371	11
00-1124B-500	54	10-710-4X/5X	59	32-1371-EC	11
00-1124W-1000	54	10-710-S-3XL	59	32-1371K	12
00-1124W-500	54	20-5538G	18	32-1380	10
00-617SH	54	20-5539BK	18	32-1380HVO	10
00-618NH	54	25-2800KV	18	32-1380P	10
00-8002-L-400	54	25-3039BK	18	32-1383	11
00-8002-XL-400	54	30-0888-1	15	32-1383AA	11
00-8052	57	30-1890	15	32-1383AB	11
00-8060	57	30-1890-1	15	32-1383-EC	11
00-9100-30	57	30-2890	15	32-1383GB	11
00-9100NP-30	57	30-2890A	15	32-1383HVO	10
00-9100NP-50	57	30-3110	13	32-1383K	12
00-9110	57	30-3110A	13	32-1383PP	11
00-9120	57	30-3111	13	32-1384	11
00-KG1412	57	30-3111A	13	32-1384K	12
00-KG1413	57	30-3111P	14	32-1393	12
00-KG1414	57	30-3111Y	14	32-1393P	12
00-SMS1412	57	30-3111Y-SP	14	32-1394P	12
00-SMS1414	57	30-3320	15	33-4001	08
10-2007BD	55	30-5800P-YBU	14	33-5001	08
10-2008V-BU/W/Y	55	30-8800Y	14	33-6001	09
10-2009BU,W,C,Y	55	30-8800YBK	14	33-6002	09
10-2010-W	55	30-8900	13	33-6003	09
10-2010-W-E	55	30-8900A	13	33-7001	09
10-2011-W	55	30-8900HP	14	33-7002	09
10-2020	55	30-8900P	14	33-8001	09

ITEM NUMBER	PAGE	ITEM NUMBER	PAGE	ITEM NUMBER	PAGE
33-9001	09	43-20WN	35	50-3600	21
33-9002	09	43-20WN-A	35	50-3600C	21
41-0001	36	43-20WN-BK	35	50-3700C-2	21
41-0001-BX	36	43-20WN-W	36	50-6639	19
41-0012	24	43-40MN-A	35	50-6639G	19
41-0013	24	43-40MN-BK	35	50-6639W	19
41-0013-1	24	43-40MN-PU	36	50-6639P-ASST-1	20
41-0038	24	43-60WN-12	35	50-6639PBK	19
41-0057UN	24	43-80MN-12	35	50-8000T	27
41-0058	24	43-80WN	35	50-8838BKBK	20
41-0058UN	24	43-80WN-12	35	50-8839G	19
41-10WL	33	50-1200	32	50-8839P-ASST-1	19
41-10WL-10	36	50-1200P	32	50-8839PBK	19
41-10WL-A	33	50-1200Q	32	50-8839PG	20
41-20WL-	33	50-1200Q-G	32	50-8842PBK	12
41-20WL-A	33	50-1400	26	55-1450	12
41-20WL-AP	33	50-1500	25	55-1450PB	12
41-20WL-P	33	50-1500G	26	55-1451	12
41-30ML-A	33	50-1501	25	60-1680	31
41-40ML-A	33	50-1502	25	60-1681	31
41-40ML-BK	33	50-1600	25	60-1960P	29
42-10WV	34	50-1600BK	26	60-1960Q	28
42-10WV-10	34	50-1800	25	60-1960S	29
42-10WV-BU	36	50-2200NY	27	60-1961P	29
42-20WV	34	50-2300	27	60-1962	29
42-20WV-A	34	50-2500	27	60-1990	29
42-20WV-BU	36	50-2600	26	60-1990R	29
42-20WV-GN-	36	50-2800	25	60-1991	30
42-20WV-GN-10	36	50-2801	25	60-2340H	30
42-20WV-SV	34	50-2890	25	60-2460P	30
42-30MV-A	34	50-2891	25	60-2461CP	28
42-40MV-A	34	50-3242	21	60-2461P	30
42-40MV-SV	34	50-3242BK	21	60-2680	31
43-10WN	35	50-3248	21	60-2680P	31
43-10WN-10	36	50-3500C	21	60-2681	31
43-10WN-A	35	50-3500C-2	21	60-3690	30

ITEM NUMBER	PAGE	ITEM NUMBER	PAGE	ITEM NUMBER	PAGE
60-3690A	30	96-5415	23	98-3800-O	51
60-4022	32	96-5416	23	98-3801-G	51
60-9920G	28	96-5417	23	98-5800-O	50
60-99200	28	96-5418	22	98-5801-G	50
65-1812	31	96-5419	22	98-5900-O	50
65-1880	31	96-6110	22	98-5901-G	50
65-1880P	31	96-6110FP	22	98-911	54
65-1881	31	96-6120	22	98-911B	54
65-1954	32	96-6120FP	22	99-A80	60
65-2880	31	96-6901	23	99-A80-1	60
65-2881	31	96-6901P	23	99-A80-1-BK	60
66-6401	32	96-6901Q	23	99-G8800-A	43
66-6401C/P	32	98-0300-O	45	99-G8800-C	43
66-6411	32	98-0301-G	45	99-G8800-CAF	43
66-6412	32	98-1200-O	45	99-G8800-G	43
66-6413	32	98-1201-G	45	99-G8900	43
66-6414	32	98-1300-O	46	99-G8901	43
88-1301-1	27	98-1301-G	46	99-G8901-CAF	43
90-103R-K	37	98-1301-GS	46	99-G8901GN-CAF	43
90-103R-K-10	37	98-2500-O	47	99-RACK	43
90-103R-K-GN	37	98-2501-G	47	99-T000	60
90-103R-K-PK	37	98-2601-G	47	99-T000B	60
90-103R-K-Y	37	98-2700-O	48	99-T001	60
90-5020	37	98-2701-G	48	99-T001-2J	60
90-5020D	37	98-2800-O	48	99-T003	60
90-9510NV	38	98-2801-G	48	99-T004	60
90-9510VCB	38	98-2900-O	49	99-T005	60
90-9520CB	38	98-2901-G	49	99-T005-.75	60
90-9520N	38	98-2980-O	49	99-T005-.75BU	60
90-9520NF	38	98-2981-G	49	99-T005-1	60
90-9530CB	38	98-3001-G	53	99-T005-1.5	60
90-9530N	38	98-3011-G	53	99-T005-1.5BU	60
96-5401	23	98-3500-O	52	99-T005-1BU	60
96-5401P	23	98-3501-G	52	99-T005-2	60
96-5401Q	23	98-3600-O	51	99-T005-2BU	60
96-5402	23	98-3601-G	51	99-T005-3	60

ITEM NUMBER	PAGE	ITEM NUMBER	PAGE	ITEM NUMBER	PAGE
99-T005-3BU	60	99-T8200SM	39	99-T9100-M	42
99-T006G	61	99-T8300-C	40	99-T9300BK-C	42
99-T007A	61	99-T8300-CAF	40	99-T9300BK-CAF	42
99-T008	61	99-T8300-G	40	99-T9300BK-G	42
99-T009	61	99-T8400-C	40	99-T9300R-C	42
99-T009A	61	99-T8400-CAF	40	99-T9300R-G	42
99-T00-TP-2	62	99-T8400-G	40	99-T9300R-GAF	42
99-T00-TP-3	62	99-T8500A	40	99-TB1	43
99-T010	62	99-T8500BM	40	99-V8000C	43
99-T010YBK, RW	62	99-T8500-C	40	MGUGET-L	36
99-T0811D-2	62	99-T8500-CAF	40	SM-1HDPF	33
99-T0811D-3	62	99-T8500-G	40		
99-T0911-2	62	99-T8500SM	40		
99-T0911-3	62	99-T8600-C	41		
99-T0911-3P	62	99-T8600-CAF	41		
99-T1000	60	99-T8600-G	41		
99-T1000B	60	99-T8700-C	41		
99-T8000-BU	39	99-T8700-CAF	41		
99-T8000-C	39	99-T8700-G	41		
99-T8000-CAF	39	99-T8800A	41		
99-T8000-G	39	99-T8800BM	41		
99-T8100A	39	99-T8800BU	41		
99-T8100C	39	99-T8800C	41		
99-T8100CAF	39	99-T8800CAF	41		
99-T8100G	39	99-T8800G	41		
99-T8100-IO	39	99-T8800-IO	41		
99-T8100-IR5	39	99-T8900C	42		
99-T8200A	39	99-T8900CAF	42		
99-T8200BM	39	99-T8900G	42		
99-T8200BU	39	99-T9000C	42		
99-T8200C	39	99-T9000G	42		
99-T8200CAF	39	99-T9100-BM	42		
99-T8200CBF	39	99-T9100-C	42		
99-T8200G	39	99-T9100-CAF	42		
99-T8200-IO	39	99-T9100-G	42		
99-T8200M	39	99-T9100-IO	42		



We Bring Safety To Life